

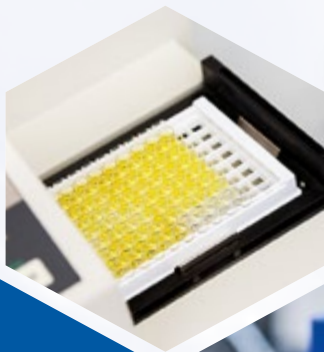
# Product Catalogue

2025

*Your partner in...*

ELISA  
RIA  
LC-MS/MS

*...diagnostics*





# tec

Demeditec Diagnostics GmbH is a privately owned company located in northern Germany. Since the foundation in 1987 Demeditec has rapidly grown to become a successful and reliable manufacturer and supplier of in vitro diagnostic test kits. We are, therefore, proud to present an extensive products panel of non-radioactive (ELISA) and radioactive (RIA) test systems and recently also reagents for LC-MS/MS.

Our top-selling products feature Human and Veterinary Diagnostics, Endocrinology – especially Salivary Diagnostics –, Infectious Diseases, Autoimmunity, Biogenic Amines, Tumor Markers and Food Analytics.

Our customers are located worldwide and include private laboratories, hospitals, universities as well as other research institutions and pharmaceutical companies.

To ensure the quality of our products, services and support, Demeditec has been certified according to EN ISO 9001 and EN ISO 13485 since 2003 and according to the GMP standard since 2011. These certifications, along with qualified and creative personnel, enable the development of innovative test kits in our R&D department.

We welcome you to be a part of our network and hope to convince you of the quality of our products and support.



Arndt Stüber  
General Manager



## Contents

|            |                              |    |
|------------|------------------------------|----|
|            | Introduction                 | 3  |
| <b>New</b> | LC-MS/MS                     | 4  |
|            | Cardiovascular Disease       | 5  |
|            | Tumor Marker                 | 5  |
|            | Veterinary Diagnostics       | 6  |
|            | Salivary Diagnostics         | 8  |
|            | Growth Factor                | 8  |
|            | Biogenic Amines              | 9  |
|            | Autoimmunity                 | 10 |
|            | Bone Metabolism              | 11 |
|            | Immunology                   | 12 |
|            | Infectious Disease           | 14 |
|            | Food Analytics               | 16 |
|            | Allergy & Food Intolerance   | 17 |
|            | Diabetes                     | 17 |
|            | Reproduction / Down-Syndrome | 18 |
|            | Thyroid                      | 19 |
|            | Nephrology                   | 20 |
|            | Others                       | 20 |
|            | Index                        | 21 |
|            | List of abbreviations        | 23 |
|            | Who we are!                  | 24 |

## Introduction

Dear partner,

by specializing and expanding our product range, we are able to supply new kinds of customer groups and establish our enzyme-immunoassays in numerous laboratories, hospitals, universities as well as other research institutions and pharmaceutical companies.

With this product catalogue we'd like to introduce our top-selling assays to you!





The continuous development of modern mass spectrometric measurement methods has established liquid chromatography-mass spectrometry (LC-MS) as an analytical gold standard for the clinical diagnosis

of steroid hormones, vitamins, biogenic amines and other metabolites. We offer clinical mass spectrometry diagnostic reagents that comprise complete sets as well as separately available calibrators, controls, and isotopically-labeled standards.

A particular important field of application for clinical LC-MS is Therapeutic Drug Monitoring (TDM) to determine clinically relevant drug levels. We offer panel test reagents covering Tricyclic Antidepressants (TCAs), Neuroleptics, and Immunosuppressants.

| Method   | Cat.-No.          | Tests          | Incubation time | Standard range   | Sensitivity   | Internal controls | Final sample volume | Sample type             | Substrate |
|--|-------------------|----------------|-----------------|--|---|-------------------|---------------------|-------------------------|-----------|
| <b>Cortisol &amp; Cortisone</b>                  |                   |                |                 |  |   |                   |                     |                         |           |
| LC-MS/MS   | 1040 KIT M CORT   | 200            | 5 min           | Cortisol: 1.5 – 603 nmol/l,<br>Cortisone: 0 – 720 nmol/l               | Cortisol: 0.2 nmol/l,<br>Cortisone: 0.2 nmol/l                | -                 | 5 – 20 µl           | urine, saliva           | MRM, pos. |
| Calibrator                                       | 1042 CAL M CORT   | 6x2x1 ml       | 5 min           | Cortisol: 1.5 – 603 nmol/l,<br>Cortisone: 0 – 720 nmol/l               | -   | -                 | 5 – 20 µl           | urine, saliva           | MRM, pos. |
| Control  | 1041 CON M CORT   | 3x3x1 ml       | 5 min           | -  | -   | 3                 | 5 – 20 µl           | urine, saliva           | MRM, pos. |
| Internal Standard                                | 1049.10 M CORT    | 10x6 ml        | -               | -  | -   | -                 | 5 – 20 µl           | -                       | MRM, pos. |
| <b>Cortisol &amp; Cortisone Dilute and Shoot</b> |                   |                |                 |  |   |                   |                     |                         |           |
| LC-MS/MS   | 1180 KIT M CODS   | 300            | 30 min          | refer to data sheet  | Cortisol: 0.2 nmol/l,<br>Cortisone: 0.218 nmol/l              | -                 | 10 – 20 µl          | urine                   | MRM, pos. |
| <b>Metanephrines</b>                             |                   |                |                 |  |   |                   |                     |                         |           |
| LC-MS/MS   | 1060 KIT M MET    | 200            | 30 min          | MT: 0 – 5.31 nmol/l,<br>NMT: 0 – 5.98 nmol/l,<br>3-MT: 0 – 5.96 nmol/l | MT: 0.032 nmol/l,<br>NMT: 0.041 nmol/l,<br>3-MT: 0.093 nmol/l | -                 | 5 – 20 µl           | plasma                  | MRM, pos. |
| Calibrator                                       | 1061 CAL M MET    | 6x2x2 ml       | 30 min          | MT: 0 – 5.31 nmol/l,<br>NMT: 0 – 5.98 nmol/l,<br>3-MT: 0 – 5.96 nmol/l | -   | -                 | 5 – 20 µl           | plasma                  | MRM, pos. |
| Control  | 1062 CON M MET    | 3x3x2 ml       | 30 min          | -  | -   | 3                 | 5 – 20 µl           | plasma                  | MRM, pos. |
| Internal Standard                                | 1069.10 M MET     | 10x6 ml        | -               | -  | -   | -                 | 5 – 20 µl           | -                       | MRM, pos. |
| <b>Methylmalonic Acid</b>                        |                   |                |                 |  |   |                   |                     |                         |           |
| LC-MS/MS   | 1000 KIT M MMA    | 300            | 6 min           | < 50 – 1927 nmol/l   | 37.8 nmol/l   | -                 | 10 µl               | serum,<br>plasma, urine | MRM, neg. |
| Calibrator                                       | 1001 CAL M MMA    | 6x2x<br>500 µl | 6 min           | < 50 – 1927 nmol/l   | -   | -                 | 10 µl               | serum,<br>plasma, urine | MRM, neg. |
| Control  | 1017 CON M MMA    | 3x3x<br>500 µl | 6 min           | -  | -   | 3                 | 10 µl               | serum,<br>plasma, urine | MRM, neg. |
| Internal Standard                                | 1008.10 M MMA     | 10x6 ml        | -               | -  | -   | -                 | 10 µl               | -                       | MRM, neg. |
| <b>Vitamin A &amp; E</b>                         |                   |                |                 |  |   |                   |                     |                         |           |
| LC-MS/MS   | 1080 KIT M VAE    | 300            | 35 min          | Vitamin A: 0 – 3.85 µmol/l,<br>Vitamin E: 0 – 49.94 µmol/l             | Vitamin A: 0.25 µmol/l,<br>Vitamin E: 3.5 µmol/l              | -                 | 2 µl                | serum,<br>plasma        | MRM, pos. |
| Calibrator                                       | 2001 CAL HM VAE   | 6x2x<br>500 µl | 35 min          | Vitamin A: 0 – 3.85 µmol/l,<br>Vitamin E: 0 – 49.94 µmol/l             | -   | -                 | 2 µl                | serum,<br>plasma        | MRM, pos. |
| Control  | 2002 CON HM VAE   | 3x3x<br>500 µl | 35 min          | -  | -   | 3                 | 2 µl                | serum,<br>plasma        | MRM, pos. |
| Internal Standard                                | 1090 M VAE        | 100 ml         | -               | -  | -   | -                 | 2 µl                | -                       | MRM, pos. |
| <b>Vitamin B1 &amp; B6</b>                       |                   |                |                 |  |   |                   |                     |                         |           |
| LC-MS/MS   | 1020 KIT M VB1B6  | 300            | 35 min          | TPP: 41 – 633 nmol/l,<br>PLP: 22 – 307 nmol/l                          | Vitamin B1: 9.4 nmol/l,<br>Vitamin B6: 5.5 nmol/l             | -                 | 10 – 20 µl          | wb                      | MRM, pos. |
| Calibrator                                       | 1022a M VB1B6     | 6x2x<br>250 µl | 35 min          | TPP: 41 – 633 nmol/l,<br>PLP: 22 – 307 nmol/l                          | -   | -                 | 10 – 20 µl          | wb                      | MRM, pos. |
| Control  | 1021a CON M VB1B6 | 3x3x<br>250 µl | 35 min          | -  | -   | 3                 | 10 – 20 µl          | wb                      | MRM, pos. |
| Internal Standard                                | 1029.10 M VB1B6   | 10x6 ml        | -               | -  | -   | -                 | 10 – 20 µl          | -                       | MRM, pos. |
| <b>Therapeutic Drug Monitoring:</b>              |                   |                |                 |  |   |                   |                     |                         |           |
| <b>Immunosuppressants</b>                        |                   |                |                 |  |   |                   |                     |                         |           |
| LC-MS/MS   | 4180 KIT P IMM    | 300            | 35 min          | refer to data sheet  | 0 – 0.817 µg/l  | -                 | 25 µl               | wb                      | MRM, pos. |
| Calibrator                                       | 4181a P IMM       | 6x2x250 µl     | 35 min          | refer to data sheet  | -   | -                 | 25 µl               | wb                      | MRM, pos. |
| Control  | 4182a P IMM       | 3x3x250 µl     | 35 min          | -  | -   | 3                 | 25 µl               | wb                      | MRM, pos. |
| Internal Standard                                | 4189 P IMM        | 55 ml          | -               | -  | -   | -                 | 25 µl               | -                       | MRM, pos. |
| <b>Psychotropic Medication 1</b>                 |                   |                |                 |  |   |                   |                     |                         |           |
| LC-MS/MS   | 4050 KIT P PS1    | 300            | 35 min          | refer to data sheet  | 0 – 1.28 µg/l   | -                 | 2 – 20 µl           | serum                   | MRM, pos. |
| Calibrator                                       | 4051 P PS1        | 6x2x500 µl     | 35 min          | refer to data sheet  | -   | -                 | 2 – 20 µl           | serum                   | MRM, pos. |
| Control  | 4052 P PS1        | 3x3x500 µl     | 35 min          | -  | -   | 3                 | 2 – 20 µl           | serum                   | MRM, pos. |
| Internal Standard                                | 4059 P PS1        | 100 ml         | -               | -  | -   | -                 | 2 – 20 µl           | -                       | MRM, pos. |
| <b>Psychotropic Medication 2</b>                 |                   |                |                 |  |   |                   |                     |                         |           |
| LC-MS/MS   | 4070 KIT P PS2    | 300            | 35 min          | refer to data sheet  | 0 – 0.18 µg/l   | -                 | 2 – 20 µl           | serum                   | MRM, pos. |
| Calibrator                                       | 4071 P PS2        | 6x2x500 µl     | 35 min          | refer to data sheet  | -   | -                 | 2 – 20 µl           | serum                   | MRM, pos. |
| Control  | 4072 CON P PS2    | 3x3x500 µl     | 35 min          | -  | -   | 3                 | 2 – 20 µl           | serum                   | MRM, pos. |
| Internal Standard                                | 4079.10 P PS 2    | 10x2.5 ml      | -               | -  | -   | -                 | 2 – 20 µl           | -                       | MRM, pos. |

## Cardiovascular Disease

Cardiovascular diseases (CVDs) are the leading cause of death globally, taking an estimated 17.9 million lives each year. CVDs are a group of disorders

of the heart and blood vessels and include coronary heart disease, cerebrovascular disease, rheumatic heart disease and other conditions.

| Method                             | Cat.-No.  | Tests | Incubation time | Standard range    | Sensitivity | Internal controls | Final sample volume | Sample type               | Isotope / Substrate |
|------------------------------------|-----------|-------|-----------------|-------------------|-------------|-------------------|---------------------|---------------------------|---------------------|
| <b>Active Renin</b>                |           |       |                 |                   |             |                   |                     |                           |                     |
| IRMA                               | DSL25100  | 100   | 3 h             | 0 – 500 pg/ml     | 0.81 pg/ml  | 2                 | 200 µl              | plasma                    | I-125               |
| <b>Angiotensin I</b>               |           |       |                 |                   |             |                   |                     |                           |                     |
| RIA                                | IT3518    | 100   | 3 h             | 0.29 – 28.5 ng/ml | 0.07 ng/ml  | 1                 | 75 µl               | plasma                    | I-125               |
| <b>Angiotensinogen total</b>       |           |       |                 |                   |             |                   |                     |                           |                     |
| ELISA                              | JP27412   | 96    | 2 h             | 0.31 – 20 ng/ml   | 0.03 ng/ml  | -                 | 100 µl              | serum, plasma, urine, ccs | TMB 450 nm          |
| <b>Plasma Renin Activity (PRA)</b> |           |       |                 |                   |             |                   |                     |                           |                     |
| ELISA                              | DEMSE5600 | 96    | 1 h 40 min      | 0.2 – 60 ng/ml    | 0.14 ng/ml  | 2                 | 50 µl               | plasma                    | TMB 450 nm          |
| <b>Renin</b>                       |           |       |                 |                   |             |                   |                     |                           |                     |
| ELISA                              | DE5125    | 96    | 3 h 15 min      | 4 – 128 pg/ml     | 4.308 pg/ml | 2                 | 50 µl               | serum, plasma             | TMB 450 nm          |

## Tumor Marker

A tumor marker is a substance found in the blood, urine, or body tissues that can be elevated in cancer, among other tissue types. There are many different tumor markers, each indicative of a particular disease process, and they are used in oncology to help detect the presence of cancer. An elevated level of a tumor marker can indicate cancer; however, there can also be other causes of the elevation. Tumor markers can be produced directly by

the tumor or by non-tumor cells as a response to the presence of a tumor. Determination of tumor marker levels by serum testing are useful for: diagnosis of cancer, prognosis cancerous tumors progression, indicating of metastases, detection of residual disease (after surgery), assessment of cancers treatment.

| Method                      | Cat.-No. | Tests | Incubation time | Standard range   | Sensitivity   | Internal controls | Final sample volume | Sample type          | Isotope / Substrate |
|-----------------------------|----------|-------|-----------------|------------------|---------------|-------------------|---------------------|----------------------|---------------------|
| <b>alpha-subunit</b>        |          |       |                 |                  |               |                   |                     |                      |                     |
| IRMA                        | IT1186   | 100   | 1 h             | 0.28 – 9.5 IU/l  | 0.02 IU/l     | 1                 | 100 µl              | serum, plasma        | I-125               |
| <b>beta-2-Microglobulin</b> |          |       |                 |                  |               |                   |                     |                      |                     |
| RIA                         | IT1113   | 100   | 1 h 30 min      | 0.33 – 28.5 mg/l | 0.1 mg/l      | 1                 | 50 µl               | serum, plasma, urine | I-125               |
| <b>CA125</b>                |          |       |                 |                  |               |                   |                     |                      |                     |
| ELISA                       | DE5072   | 96    | 1 h 15 min      | 25 – 600 U/ml    | 0.25 U/ml     | 2                 | 50 µl               | serum, plasma        | TMB 450 nm          |
| IRMA                        | IT2233   | 100   | 4 h             | 15 – 500 U/ml    | 0.69 U/ml     | 1                 | 100 µl              | serum, plasma        | I-125               |
| <b>CA15-3</b>               |          |       |                 |                  |               |                   |                     |                      |                     |
| ELISA                       | DE5068   | 96    | 2 h 15 min      | 25 – 200 U/ml    | 0.5 U/ml      | 2                 | 10 µl               | serum, plasma        | TMB 450 nm          |
| IRMA                        | IT2397   | 100   | 3 h             | 16 – 301 U/ml    | 0.15 U/ml     | 1                 | 200 µl              | serum, plasma        | I-125               |
| <b>CA19-9</b>               |          |       |                 |                  |               |                   |                     |                      |                     |
| ELISA                       | DE5069   | 96    | 2 h 30 min      | 15 – 240 U/ml    | 0.2 U/ml      | 2                 | 50 µl               | serum, plasma        | TMB 450 nm          |
| IRMA                        | IT3151   | 100   | 3 h             | 17 – 480 U/ml    | 2 U/ml        | 1                 | 50 µl               | serum, plasma        | I-125               |
| <b>CA72-4</b>               |          |       |                 |                  |               |                   |                     |                      |                     |
| ELISA                       | DE5071   | 96    | 2 h 30 min      | 3 – 100 U/ml     | 0.60 U/ml     | 2                 | 20 µl               | serum, plasma        | TMB 450 nm          |
| IRMA                        | DE51100  | 100   | 2 h overnight   | 2.2 – 92 U/ml    | 1.94 U/ml     | 2                 | 100 µl              | serum                | I-125               |
| <b>CEA</b>                  |          |       |                 |                  |               |                   |                     |                      |                     |
| ELISA                       | DE1868   | 96    | 1 h 30 min      | 5 – 100 ng/ml    | < 0.596 ng/ml | 2                 | 50 µl               | serum, plasma        | TMB 450 nm          |
| IRMA                        | DE38100  | 100   | 1 h             | 1.1 – 180 ng/ml  | 0.05 ng/ml    | 2                 | 50 µl               | serum                | I-125               |
| IRMA                        | IT2204   | 100   | 2 h             | 1 – 340 ng/ml    | 0.2 ng/ml     | 2                 | 30 µl               | serum                | I-125               |
| <b>Chromogranin A</b>       |          |       |                 |                  |               |                   |                     |                      |                     |
| ELISA                       | DEE9000  | 96    | 2 h 25 min      | 30 – 900 µg/l    | 1.4 µg/l      | 2                 | 50 µl               | serum                | TMB 450 nm          |
| <b>CVFRA 21-1</b>           |          |       |                 |                  |               |                   |                     |                      |                     |
| ELISA                       | DE5070   | 96    | 1 h 15 min      | 3 – 50 ng/ml     | 0.185 ng/ml   | 2                 | 50 µl               | serum, plasma        | TMB 450 nm          |
| <b>NSE</b>                  |          |       |                 |                  |               |                   |                     |                      |                     |
| ELISA                       | DE2353   | 96    | 1 h 15 min      | 7 – 120 ng/ml    | 0.19 ng/ml    | 2                 | 25 µl               | serum                | TMB 450 nm          |
| <b>PSA free</b>             |          |       |                 |                  |               |                   |                     |                      |                     |
| IRMA                        | IT2520   | 50    | 2 h             | 0.3 – 30 ng/ml   | 0.02 ng/ml    | 2                 | 200 µl              | serum, plasma        | I-125               |
| <b>PSA total</b>            |          |       |                 |                  |               |                   |                     |                      |                     |
| IRMA                        | IT1950   | 100   | 2 h             | 1 – 100 ng/ml    | 0.1 ng/ml     | 2                 | 100 µl              | serum                | I-125               |
| <b>Thymidine Kinase</b>     |          |       |                 |                  |               |                   |                     |                      |                     |
| REA                         | IT1948   | 50    | 4 h             | 2.5 – 80 U/l     | 0.74 U/l      | 1                 | 25 µl               | serum, plasma        | I-125               |

# Veterinary Diagnostics



Find an overview about our Veterinary ELISAs at one glance on our special leaflet.

This product group contains a wide range of immunoassays for the determination of various parameters for veterinary diagnostics and research. Our portfolio includes immunoassays for analytes of different animals. Here we offer many species-specific test kits of which some are unique worldwide. These are often used by CROs and in pharmaceutical studies.

Moreover for determination of steroids in animals also our human test-kits can be used since the structure of steroid hormones is the same in all species. It would be recommended performing an extraction step of the samples prior to the assay in order to avoid any influences caused by the different matrix. To avoid this additional step alternatively steroid measurement of the free steroid fraction is possible by using salivary samples. Usually it is not difficult to get saliva samples from various animals which can be used directly in our saliva assays which can be found on the next page.

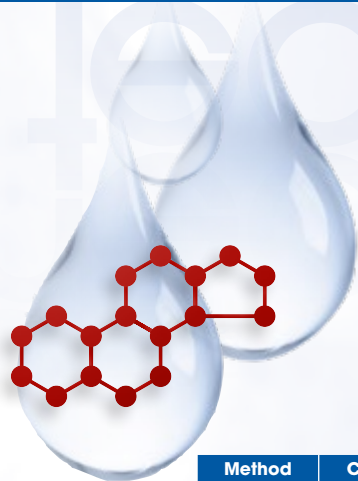
**New**

**soluble alpha-Klotho mouse ELISA (JP27601)**

| Method                                     | Applicable Species    | Cat.-No.     | Tests | Incubation time           | Standard range      | Sensitivity | Final sample volume | Sample type                        | Substrate  |
|--|-----------------------|--------------|-------|---------------------------|---------------------|-------------|---------------------|------------------------------------|------------|
| <b>Amyloid beta (1-40) rat/mouse ELISA</b> | rat, mouse            | JP27720      | 96    | overnight<br>+ 1 h 30 min | 1.56 – 100 pg/ml    | 0.28 pg/ml  | 100 µl              | serum, plasma, brain extract, ccs  | TMB 450 nm |
| <b>Amyloid beta (1-42) mouse/rat ELISA</b> | rat, mouse            | JP27721      | 96    | overnight<br>+ 1 h 30 min | 1.56 – 100 pg/ml    | 0.05 pg/ml  | 100 µl              | serum, plasma                      | TMB 450 nm |
| <b>Anaplasma vet ELISA</b>                 | canine, other mammals | DEANAVT0850  | 96    | 1 h 45 min                | Cut-off             | -           | 100 µl              | serum                              | TMB 450 nm |
| <b>Angiopoietin-like 3 mouse ELISA</b>     | mouse                 | JP27410      | 96    | 2 h                       | 0.31 – 20 ng/ml     | 0.04 ng/ml  | 100 µl              | serum, plasma, ccs                 | TMB 450 nm |
| <b>Babesia vet ELISA</b>                   | various               | DEBABVT0890  | 96    | 1 h 45 min                | Cut-off             | -           | 100 µl              | serum                              | TMB 450 nm |
| <b>Borrelia vet ELISA</b>                  | canine, other mammals | DEBORVT0040  | 96    | 1 h 45 min                | Cut-off             | -           | 100 µl              | serum                              | TMB 450 nm |
| <b>Brucella vet ELISA</b>                  | bovine, porcine       | DEBRUVT0050  | 96    | 1 h 45 min                | Cut-off             | -           | 100 µl              | serum, milk                        | TMB 450 nm |
| <b>Canine Distemper Virus (CDV) ELISA</b>  | canine                | DEMEAVT0330  | 96    | 1 h 45 min                | Cut-off             | -           | 100 µl              | serum                              | TMB 450 nm |
| <b>Canine Parvovirus (CPV) ELISA</b>       | canine                | DEPARVT0370  | 96    | 1 h 45 min                | Cut-off             | -           | 100 µl              | serum                              | TMB 450 nm |
| <b>CCL8/MCP-2 mouse ELISA</b>              | mouse                 | JP27773      | 96    | 2 h                       | 78 – 5,000 pg/ml    | 50 pg/ml    | 100 µl              | serum, plasma                      | TMB 450 nm |
| <b>Corticosterone rat/mouse ELISA</b>      | rat, mouse            | DEV9922      | 96    | 2 h 30 min                | 15 – 2,250 ng/ml    | 6.1 ng/ml   | 10 µl               | serum, plasma                      | TMB 450 nm |
| <b>Coxiella Phase 1 vet ELISA</b>          | various               | DECOX1VT0600 | 96    | 1 h 45 min                | Cut-off             | -           | 100 µl              | serum, milk                        | TMB 450 nm |
| <b>Coxiella Phase 2 vet ELISA</b>          | various               | DECOX2VT0600 | 96    | 1 h 45 min                | Cut-off             | -           | 100 µl              | serum, milk                        | TMB 450 nm |
| <b>Coxiella vet ELISA</b>                  | bovine, other mammals | DECOXVT0600  | 96    | 1 h 45 min                | Cut-off             | -           | 100 µl              | serum                              | TMB 450 nm |
| <b>CRP canine ELISA</b>                    | dogs                  | DEI024       | 96    | 1 h 50 min                | 48 – 500 ng/ml      | 29.8 ng/ml  | 20 µl               | serum, plasma, cc                  | TMB 450 nm |
| <b>Dirofilaria Antigen vet ELISA</b>       | various               | DEDIRVT4760  | 96    | 1 h 45 min                | Cut-off             | -           | 100 µl              | serum                              | TMB 450 nm |
| <b>DMP1 rat ELISA</b>                      | rat                   | JP27363      | 96    | 2 h                       | 39.06 – 2,500 pg/ml | 4.04 pg/ml  | 100 µl              | serum, plasma, ccs                 | TMB 450 nm |
| <b>Echinococcus vet ELISA</b>              | various               | DEECHVT0130  | 96    | 1 h 45 min                | Cut-off             | -           | 100 µl              | serum                              | TMB 450 nm |
| <b>Ehrlichia vet ELISA</b>                 | canine, other mammals | DEEHRVT0930  | 96    | 1 h 45 min                | Cut-off             | -           | 100 µl              | serum                              | TMB 450 nm |
| <b>Endothelin-1 (Big) rat ELISA</b>        | rat                   | JP27167      | 96    | overnight<br>+ 1 h        | 0.78 – 100 pg/ml    | 0.3 pg/ml   | 100 µl              | serum, plasma, ccs, tissue extract | TMB 450 nm |
| <b>Estradiol rat ELISA</b>                 | rat                   | DEV9999      | 96    | 3 h 30 min                | 5 – 1,280 pg/ml     | 2.5 pg/ml   | 75 µl               | serum                              | TMB 450 nm |

| Method  | Applicable Species          | Cat.-No.     | Tests | Incubation time         | Standard range      | Sensitivity | Final sample volume | Sample type        | Substrate  |
|---|-----------------------------|--------------|-------|-------------------------|---------------------|-------------|---------------------|--------------------|------------|
| <b>Estrone-3-Sulfate equine</b>                 | equine                      | DEV9933      | 96    | 2 h                     | 5 – 1,000 ng/ml     | 0.424 ng/ml | 20 µl               | serum              | TMB 450 nm |
| <b>Feline Corona Virus (FCoV/FIP)</b>           | feline                      | DEFIPVT0870  | 96    | 1 h 45 min              | Cut-off             | -           | 100 µl              | serum              | TMB 450 nm |
| <b>Feline Immunodeficiency Virus (FIV)</b>      | feline                      | DEFIVVT0750  | 96    | 1 h 45 min              | Cut-off             | -           | 100 µl              | serum              | TMB 450 nm |
| <b>Feline Leukemia Virus (FeLV) Antigen</b>     | feline                      | DEFELVT4800  | 96    | 1 h 45 min              | Cut-off             | -           | 100 µl              | serum              | TMB 450 nm |
| <b>Giardia Antigen vet</b>                      | various                     | DEGIAVT4160  | 96    | 1 h 45 min              | Cut-off             | -           | 100 µl              | stool              | TMB 450 nm |
| <b>GRO/CINC-1 rat</b>                           | rat                         | JP27162      | 96    | 2 h                     | 4.69 – 300 pg/ml    | 0.35 pg/ml  | 100 µl              | serum, plasma, ccs | TMB 450 nm |
| <b>GRO/CINC-3 rat</b>                           | rat                         | JP27163      | 96    | 2 h                     | 4.69 – 300 pg/ml    | 0.51 pg/ml  | 100 µl              | serum, plasma, ccs | TMB 450 nm |
| <b>GRO/KC mouse</b>                             | mouse                       | JP27137      | 96    | 2 h                     | 23.44 – 1,500 pg/ml | 1.27 pg/ml  | 100 µl              | serum, plasma, ccs | TMB 450 nm |
| <b>Haptoglobin canine &amp; feline</b>          | canine, feline              | DE1033       | 96    | 1 h 45 min              | 125 – 2,000 ng/ml   | 22.9 ng/ml  | 20 µl               | serum              | TMB 450 nm |
| <b>IGF-I mouse/rat</b>                          | rat, mouse                  | DEE025       | 96    | 2 h                     | 0.5 – 18 ng/ml      | 0.315 ng/ml | 50 µl               | serum, plasma      | TMB 450 nm |
| <b>Interleukin-1beta rat</b>                    | rat                         | JP27193      | 96    | 1 d 1 h overnight + 1 h | 11.7 – 750 pg/ml    | 1.67 pg/ml  | 100 µl              | serum, plasma, ccs | TMB 450 nm |
| <b>Interleukin-6 mouse</b>                      | mouse                       | JP27768      | 96    | 1 d 1 h overnight + 1 h | 10.94 – 700 pg/ml   | 1.07 pg/ml  | 100 µl              | serum, plasma, ccs | TMB 450 nm |
| <b>Leishmania vet</b>                           | canine, other mammals       | DE0310       | 96    | 1 h 45 min              | Cut-off             | -           | 100 µl              | serum              | TMB 450 nm |
| <b>Leptin mouse</b>                             | mouse                       | JP27160      | 96    | 2 h                     | 12.5 – 800 pg/ml    | 0.86 pg/ml  | 100 µl              | serum, plasma, ccs | TMB 450 nm |
| <b>Leptin rat</b>                               | rat                         | JP27295      | 96    | 2 h                     | 56.25 – 3,600 pg/ml | 10.8 pg/ml  | 100 µl              | serum, plasma, ccs | TMB 450 nm |
| <b>Leptospira IgM vet</b>                       | various                     | DELEPVM0660  | 96    | 1 h 45 min              | Cut-off             | -           | 100 µl              | serum              | TMB 450 nm |
| <b>Leptospira vet</b>                           | canine, other mammals       | DELEPVT0660  | 96    | 1 h 45 min              | Cut-off             | -           | 100 µl              | serum              | TMB 450 nm |
| <b>LRG mouse</b>                                | mouse                       | JP27785      | 96    | 2 h                     | 0.25 – 16 ng/ml     | 0.06 ng/ml  | 100 µl              | serum, plasma, ccs | TMB 450 nm |
| <b>MCP-1 rat</b>                                | rat                         | JP17176      | 96    | 2 h                     | 50 – 3,200 pg/ml    | 40 pg/ml    | 100 µl              | serum, urine, ccs  | TMB 450 nm |
| <b>N-ERC/Mesothelin rat</b>                     | rat                         | JP27765      | 96    | 2 h                     | 0.08 – 5 ng/ml      | 10 pg/ml    | 100 µl              | serum, plasma, ccs | TMB 450 nm |
| <b>Osteopontin mouse</b>                        | mouse                       | JP27351      | 96    | 2 h                     | 1 – 64 ng/ml        | 0.15 ng/ml  | 100 µl              | urine, plasma, ccs | TMB 450 nm |
| <b>Osteopontin N-half mouse</b>                 | mouse                       | JP27259      | 96    | 2 h                     | 25 – 1,600 pmol/l   | 5.63 pmol/l | 100 µl              | urine, plasma, ccs | TMB 450 nm |
| <b>Osteopontin rat</b>                          | rat                         | JP27360      | 96    | 2 h                     | 0.07 – 4.75 ng/ml   | 0.01 ng/ml  | 100 µl              | urine, plasma, ccs | TMB 450 nm |
| <b>Pasteurella multocida Toxin Antibody vet</b> | various                     | DEPASVT0960  | 96    | 1 h 45 min              | Cut-off             | -           | 100 µl              | serum              | TMB 450 nm |
| <b>PMSG</b>                                     | equine                      | DE1298       | 96    | 2 h 30 min              | 25 – 800 mIU/ml     | -           | 50 µl               | serum              | TMB 450 nm |
| <b>Progesterone rat/mouse</b>                   | rat, mouse                  | DEV9988      | 96    | 1 h 30 min              | 0.4 – 100 ng/ml     | 0.156 ng/ml | 10 µl               | serum, plasma      | TMB 450 nm |
| <b>Riemerella vet</b>                           | turkey, other avian species | DERIEMVT0880 | 96    | 1 h 45 min              | Cut-off             | -           | 100 µl              | serum              | TMB 450 nm |
| <b>soluble alpha-Klotho mouse</b>               | mouse                       | JP27601      | 96    | 2 h                     | 78.13 – 5,000 pg/ml | 18.06 pg/ml | 100 µl              | urine              | TMB 450 nm |
| <b>TBE/FSME IgM vet</b>                         | various                     | DETICVM0440  | 96    | 1 h 45 min              | Cut-off             | -           | 100 µl              | serum              | TMB 450 nm |
| <b>TBE/FSME vet</b>                             | various                     | DETICVT0440  | 96    | 1 h 45 min              | 50 – 300 U/ml       | -           | 100 µl              | serum              | TMB 450 nm |
| <b>Testosterone rat/mouse</b>                   | rat, mouse                  | DEV9911      | 96    | 1 h 30 min              | 0.1 – 25 ng/ml      | 0.024 ng/ml | 10 µl               | serum, plasma      | TMB 450 nm |
| <b>TNF-alpha rat</b>                            | rat                         | JP27194      | 96    | 21 h                    | 56 – 3,600 pg/ml    | 10 pg/ml    | 100 µl              | ccs                | TMB 450 nm |
| <b>Toxocara vet</b>                             | various                     | DETOCVT0450  | 96    | 1 h 45 min              | Cut-off             | -           | 100 µl              | serum              | TMB 450 nm |
| <b>Toxoplasma IgM vet</b>                       | feline                      | DETOXVM0460  | 96    | 1 h 45 min              | Cut-off             | -           | 100 µl              | serum              | TMB 450 nm |
| <b>Toxoplasma vet</b>                           | canine, feline              | DETOXVT0460  | 96    | 1 h 45 min              | 50 – 200 U/ml       | -           | 100 µl              | serum              | TMB 450 nm |
| <b>Trichinella vet</b>                          | various                     | DETRIVT0480  | 96    | 1 h 45 min              | Cut-off             | -           | 100 µl              | serum              | TMB 450 nm |
| <b>TSH canine</b>                               | canine                      | DEV9955      | 96    | 2 h 30 min              | 0.2 – 5.2 ng/ml     | 0.049 ng/ml | 100 µl              | serum, plasma      | TMB 450 nm |
| <b>TSH rat</b>                                  | rat                         | DEV9977      | 96    | 18 - 20 h               | 2.5 – 80 ng/ml      | 0.081 ng/ml | 25 µl               | serum              | TMB 450 nm |
| <b>VEGF mouse</b>                               | mouse                       | JP27102      | 96    | 2 h                     | 62.5 – 4,000 pg/ml  | 11 pg/ml    | 100 µl              | plasma, serum, ccs | TMB 450 nm |
| <b>VEGF rat</b>                                 | rat                         | JP27101      | 96    | 2 h                     | 31.25 - 2,000 pg/ml | 5.44 pg/ml  | 100 µl              | plasma, ccs        | TMB 450 nm |

## Salivary Diagnostics



The exact measurement of hormone concentrations is important for the correct estimation of the hormone balance and endocrine function. This measurement traditionally is performed in blood/serum/plasma samples. Several hormones also can be analyzed in saliva. This technique offers several advantages: the sampling is non-invasive and can be done anytime, any-

where. Saliva testing for steroid hormones by far is the most reliable and convenient method for measuring the hormone activity in endocrine disorders and in checking the hormonal balance. Typical fields of applications are: Psychology, Endocrinology, Anti-Aging, Sports Medicine, Veterinary Diagnostics and more.

| Method                                   | Cat.-No.  | Tests | Incubation time              | Standard range   | Sensitivity | Internal controls | Fine sample volume | Sample type                                     | Substrate  |
|--|-----------|-------|------------------------------|------------------|-------------|-------------------|--------------------|---|------------|
| <b>17-OH-Progesterone free in Saliva</b> |           |       |                              |                  |             |                   |                    |   |            |
| ELISA                                    | DESLV3140 | 96    | 1 h 15 min                   | 10 – 1,000 pg/ml | 2.5 pg/ml   | 2                 | 25 µl              | saliva  | TMB 450 nm |
| <b>Androstenedione free in Saliva</b>    |           |       |                              |                  |             |                   |                    |   |            |
| ELISA                                    | DESLV4780 | 96    | 1 h 15 min                   | 20 – 1,000 pg/ml | 5 pg/ml     | 2                 | 50 µl              | saliva  | TMB 450 nm |
| <b>Cortisol free in Saliva</b>           |           |       |                              |                  |             |                   |                    |   |            |
| ELISA                                    | DES6611   | 96    | 1 h 30 min                   | 0.1 – 30 ng/ml   | 0.019 ng/ml | 2                 | 50 µl              | saliva  | TMB 450 nm |
| <b>DHEA free in Saliva</b>               |           |       |                              |                  |             |                   |                    |   |            |
| ELISA                                    | DES6666   | 96    | 1 h 30 min                   | 10 – 2,560 pg/ml | 6.4 pg/ml   | 2                 | 100 µl             | saliva  | TMB 450 nm |
| <b>Direct Saliva Melatonin</b>           |           |       |                              |                  |             |                   |                    |   |            |
| ELISA                                    | EK-DSM    | 96    | 20 h 30 min<br>– 24 h 30 min | 0.48 – 20 pg/ml  | 0.5 pg/ml   | 2                 | 100 µl             | saliva  | TMB 450 nm |
| <b>Estradiol free in Saliva</b>          |           |       |                              |                  |             |                   |                    |   |            |
| ELISA                                    | DESLV4188 | 96    | 3 h                          | 1 – 100 pg/ml    | 0.72 pg/ml  | 2                 | 100 µl             | saliva  | TMB 450 nm |
| <b>Melatonin</b>                         |           |       |                              |                  |             |                   |                    |   |            |
| ELISA                                    | MLTN-96   | 96    | 17 h 30 min<br>– 25 h 30 min | 0.56 – 40 pg/ml  | –           | 2                 | 100 µl             | saliva, serum,<br>plasma, other<br>biol. fluids | TMB 450 nm |
| <b>Progesterone free in Saliva HS</b>    |           |       |                              |                  |             |                   |                    |   |            |
| ELISA                                    | DESLV5911 | 96    | 1 h 15 min                   | 10 – 2,400 pg/ml | 1.1 pg/ml   | 2                 | 100 µl             | saliva  | TMB 450 nm |
| <b>Testosterone free in Saliva</b>       |           |       |                              |                  |             |                   |                    |   |            |
| ELISA                                    | DES6622   | 96    | 1 h 30 min                   | 10 – 1,000 pg/ml | 6.1 pg/ml   | 2                 | 100 µl             | saliva  | TMB 450 nm |

## Growth Factor

Growth factors are soluble-secreted signaling polypeptides capable of instructing specific cellular responses in a biological environment. The specific cellular response triggered by growth factor signaling can result in a very wide range of cell actions, including cell survival, and control over migration, differentiation or proliferation of a specific subset of cells. They also play important roles in the maintenance of tissue homeostasis and wound healing in the adult. Their

activities are mediated via binding to transmembrane receptors that often contain cytoplasmic tyrosine kinase domains. When unregulated, many growth factors and their receptors have been implicated in tumor formation. In summary the system of Growth Hormone and the Insulin-like Growth Factors with their Binding Proteins is an important control cycle.

| Method                               | Cat.-No. | Tests | Incubation time | Standard range     | Sensitivity   | Internal controls | Final sample volume | Sample type   | Isotope / Substrate |
|--------------------------------------|----------|-------|-----------------|--------------------|---------------|-------------------|---------------------|---------------|---------------------|
| <b>Adiponectin human</b>             |          |       |                 |                    |               |                   |                     |               |                     |
| ELISA                                | DEE009   | 96    | 1 h 45 min      | 2 – 100 ng/ml      | 0.27 ng/ml    | 2                 | 100 µl              | serum, plasma | TMB 450 nm          |
| <b>GH</b>                            |          |       |                 |                    |               |                   |                     |               |                     |
| IRMA                                 | IT1397   | 100   | 1 h             | 0.5 – 102 mIU/l    | 0.1 mIU/l     | 1                 | 50 µl               | serum, plasma | I-125               |
| <b>IGFBP-3</b>                       |          |       |                 |                    |               |                   |                     |               |                     |
| ELISA                                | DEE003A  | 96    | 2 h 30 min      | 0.4 – 30 ng/ml     | 0.03 ng/ml    | 2                 | 50 µl               | serum, plasma | TMB 450 nm          |
| IRMA                                 | DE6600   | 100   | 18 – 24 h       | 2.1 – 110 ng/ml    | 0.5 ng/ml     | 2                 | 50 µl               | serum         | I-125               |
| <b>IGF-I</b>                         |          |       |                 |                    |               |                   |                     |               |                     |
| ELISA                                | DEE020   | 96    | 1 h 45 min      | 2 – 50 ng/ml       | 0.09 ng/ml    | 2                 | 20 µl               | serum, plasma | TMB 450 nm          |
| ELISA                                | DE4140   | 96    | 2 h 45 min      | 10 – 600 ng/ml     | 9.75 ng/ml    | 2                 | 20 µl               | serum         | TMB 450 nm          |
| IRMA                                 | A15729   | 100   | 1 h             | 42.9 – 2,080 ng/ml | 2 ng/ml       | 1                 | 50 µl               | serum, plasma | I-125               |
| <b>PLGF (Placenta growth factor)</b> |          |       |                 |                    |               |                   |                     |               |                     |
| ELISA                                | DE4529   | 96    | 2 h 30 min      | 25 – 1,000 pg/ml   | < 1.062 pg/ml | 2                 | 25 µl               | serum         | TMB 450 nm          |



# Biogenic Amines

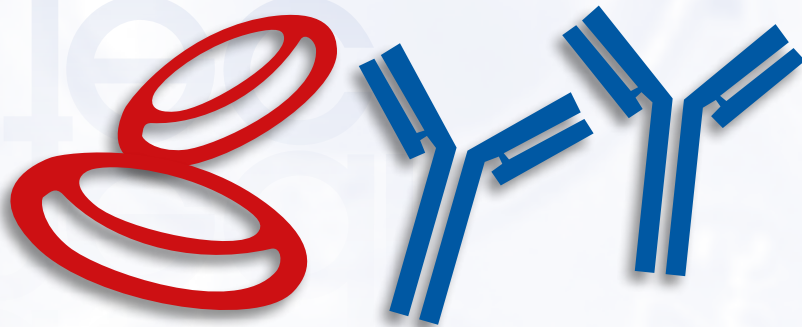


Naturally occurring biogenic amines in plants, animals and humans play a crucial role as tissue hormones or neurotransmitters. There are five established biogenic amine neurotransmitters: the three catecholamines – dopamine, norepinephrine (noradrenaline), and epinephrine (adrenaline) – and histamine and serotonin. Neurotransmitters are prominent participants in the etiology of many peripheral and central nervous system disorders.

Our portfolio of Biogenic Amines is applicable for the diagnosis of e. g. Pheochromocytoma, burn-out syndrome, cardiac diseases, hyper- and hypotensia and carcinoid syndrome.

| Method                        | Cat.-No. | Tests  | Incubation time | Standard range  | Sensitivity  | Internal controls | Final sample volume                                   | Sample type                                      | Isotope / Substrate |
|-------------------------------|----------|--------|-----------------|---|--|-------------------|---|--|---------------------|
| <b>2-CAT</b>                  |          |        |                 |   |  |                   |   |  |                     |
| ELISA                         | DEE6500  | 2 x 96 | 3 h 25 min      | AD: 1 – 200 ng/ml;<br>NAD: 5 – 1,000 ng/ml                            | AD: u: 0.9 ng/ml; p: 10 pg/ml;<br>NAD: u: 1.7 ng/ml; p: 36 pg/ml                                   | 2                 | AD: 100 µl;<br>NAD: 20 µl                             | urine, plasma                                    | TMB 450 nm          |
| <b>3-CAT</b>                  |          |        |                 |   |  |                   |   |  |                     |
| ELISA                         | DEE6600  | 3 x 96 | 3 h 25 min      | AD: 1 – 200 ng/ml;<br>NAD: 5 – 1,000 ng/ml;<br>DOP: 4.5 – 2,000 ng/ml | AD: u: 0.9 ng/ml; p: 10 pg/ml<br>NAD: u: 1.7 ng/ml; p: 36 pg/ml;<br>DOP: u: 2.5 ng/ml; p: 49 pg/ml | 2                 | AD: 100 µl;<br>NAD: 20 µl;<br>DOP: u: 25 µl; p: 50 µl | urine, plasma                                    | TMB 450 nm          |
| <b>5-HIAA</b>                 |          |        |                 |   |  |                   |   |  |                     |
| ELISA                         | DEE1900  | 96     | 2 h 20 min      | 0.5 – 50 mg/l   | 0.17 mg/l  | 2                 | 25 µl   | urine  | TMB 450 nm          |
| <b>Adrenaline</b>             |          |        |                 |   |  |                   |   |  |                     |
| ELISA                         | DEE5100R | 96     | 15 h 50 min     | 0.5 – 80 ng/ml  | 3.3 pg/ml  | 2                 | 100 µl  | various biol. sample types                       | TMB 450 nm          |
| <b>Dopamine</b>               |          |        |                 |   |  |                   |   |  |                     |
| ELISA                         | DEE6300  | 96     | 3 h 25 min      | 4.5 – 2,000 ng/ml   | u: 2.5 ng/ml; p: 49 pg/ml  | 2                 | u: 25 µl; p: 50 µl                                    | urine, plasma                                    | TMB 450 nm          |
| <b>Glutamate</b>              |          |        |                 |   |  |                   |   |  |                     |
| ELISA                         | DEE2400R | 96     | 2 h 50 min      | 0.6 – 60 µg/ml  | 0.3 µg/ml  | 2                 | 25 µl   | urine, various biol. samples                     | TMB 450 nm          |
| <b>Histamine</b>              |          |        |                 |   |  |                   |   |  |                     |
| ELISA                         | DEE1000  | 96     | 3 h 50 min      | 0.5 – 50 ng/ml  | p: 0.18 ng/ml; u: 0.22 ng/ml   | 2                 | 25 µl   | urine, plasma, urine, whole blood, biol. samples | TMB 450 nm          |
| ELISA                         | IM2562   | 96     | 2 h 30 min      | 0 – 100 nM  | 0.52 nM  | 1                 | 100 µl  |  | pNpp 405 nm         |
| <b>Metanephrine</b>           |          |        |                 |   |  |                   |   |  |                     |
| ELISA                         | DEE8100  | 96     | 16 h            | 36 – 3,600 pg/ml  | 14.9 pg/ml   | 2                 | 50 µl   | plasma   | TMB 450 nm          |
| ELISA                         | DEE8400  | 96     | 1 h             | 20 – 2,000 ng/ml  | 13 ng/ml   | 2                 | 25 µl   | urine  | TMB 450 nm          |
| <b>Nephrines</b>              |          |        |                 |   |  |                   |   |  |                     |
| ELISA                         | DEE8300  | 2 x 96 | 16 h            | MT: 36 – 3,600 pg/ml;<br>NMT: 72 – 7,200 pg/ml                        | MT: 14.9 pg/ml;<br>NMT: 17.9 pg/ml   | 2                 | MT: 50 µl;<br>NMT: 25 µl                              | plasma   | TMB 450 nm          |
| ELISA                         | DEE8600  | 2 x 96 | 1 h             | MT: 20 – 2,000 ng/ml;<br>NMT: 30 – 3,000 ng/ml                        | MT: 13 ng/ml;<br>NMT: 23 ng/ml   | 2                 | 25 µl   | urine  | TMB 450 nm          |
| <b>Noradrenaline Research</b> |          |        |                 |   |  |                   |   |  |                     |
| ELISA                         | DEE5200R | 96     | 15 h 50 min     | 0.2 – 32 ng/ml  | 1.3 pg/ml  | 2                 | 100 µl  | various biol. sample types                       | TMB 450 nm          |
| <b>Normetanephrine</b>        |          |        |                 |   |  |                   |   |  |                     |
| ELISA                         | DEE8200  | 96     | 16 h            | 72 – 7,200 pg/ml  | 17.9 pg/ml   | 2                 | 25 µl   | plasma   | TMB 450 nm          |
| ELISA                         | DEE8500  | 96     | 1 h             | 30 – 3,000 ng/ml  | 23 ng/ml   | 2                 | 25 µl   | urine  | TMB 450 nm          |
| <b>Serotonin</b>              |          |        |                 |   |  |                   |   |  |                     |
| ELISA                         | DEE8900  | 96     | 1 h             | 15 – 2,500 ng/ml  | 5.9 ng/ml  | 2                 | 25 µl   | serum, urine                                     | TMB 450 nm          |
| ELISA                         | DEE5900R | 96     | 15 h 50 min     | 0.015 – 2.5 ng/ml   | 0.005 ng/ml  | 2                 | 100 µl  | various biol. sample types                       | TMB 450 nm          |

## Autoimmunity



One of the cardinal properties of the immune system is its ability to recognize and respond to foreign antigens but not to self-antigens. Loss of this self-tolerance, results in immune reactions against one's, or autologous, antigens. Such reactions are called autoimmunity, and the diseases they cause are called autoimmune diseases. These ELISAs are suitable for the diagnosis and therapy monitoring of rheumatic diseases, thrombosis, vasculitis, diabetes and autoimmune diseases of the gastrointestinal tract.

| Method                                     | Antibody class | Cat.-No. | Tests | Incubation time | Standard range                        | Sensitivity                   | Internal controls | Final sample volume | Sample type    | Substrate  |
|--|----------------|----------|-------|-----------------|---------------------------------------|-------------------------------|-------------------|---------------------|----------------|------------|
| <b>21-OH Ab</b>                            |                |          |       |                 |                                       |                               |                   |                     |                |            |
| ELISA                                      |                | 21E/96   | 96    | 17 h 40 min     | 0.3 – 100 U/ml                        | 0.13 U/ml                     | 2                 | 50 µl               | serum          | TMB 450 nm |
| <b>Acetylcholine Receptor Autoantibody</b> |                |          |       |                 |                                       |                               |                   |                     |                |            |
| ELISA                                      |                | ACE/96   | 96    | 23 h            | 0.5 – 20 nmol/l                       | 0.25 nmol/l                   | 3                 | 100 µl              | serum          | TMB 450 nm |
| <b>AMA-M2</b>                              |                |          |       |                 |                                       |                               |                   |                     |                |            |
| ELISA                                      |                | DE7000   | 96    | 1 h 5 min       | 12.5 – 200 IU/ml                      | 1 IU/ml                       | 2                 | 100 µl              | serum, plasma  | TMB 450 nm |
| <b>ANA Hep Screen</b>                      |                |          |       |                 |                                       |                               |                   |                     |                |            |
| ELISA                                      |                | DE7020   | 96    | 1 h 5 min       | Cut-off                               | diagn. 98.9 %                 | -                 | 100 µl              | serum, plasma  | TMB 450 nm |
| <b>ANA Profile</b>                         |                |          |       |                 |                                       |                               |                   |                     |                |            |
| ELISA                                      |                | DE7010   | 96    | 1 h 5 min       | Cut-off                               | diagn. 95.5 %                 | 1                 | 100 µl              | serum, plasma  | TMB 450 nm |
| <b>ANA Screen</b>                          |                |          |       |                 |                                       |                               |                   |                     |                |            |
| ELISA                                      |                | DE7030   | 96    | 1 h 5 min       | Cut-off                               | diagn. 96.4 %                 | 1                 | 100 µl              | serum, plasma  | TMB 450 nm |
| <b>ANCA Screen</b>                         |                |          |       |                 |                                       |                               |                   |                     |                |            |
| ELISA                                      |                | DE7050   | 96    | 1 h 5 min       | Cut-off                               | diagn. 95.1 %                 | -                 | 100 µl              | serum, plasma  | TMB 450 nm |
| <b>ANCA-P (MPO)</b>                        |                |          |       |                 |                                       |                               |                   |                     |                |            |
| ELISA                                      |                | DE7080   | 96    | 1 h 5 min       | 5 – 100 U/ml                          | 0.5 U/ml                      | 2                 | 100 µl              | serum, plasma  | TMB 450 nm |
| <b>Annexin V Ab</b>                        |                |          |       |                 |                                       |                               |                   |                     |                |            |
| ELISA                                      | IgG/IgM        | DE7100   | 96    | 1 h 5 min       | 6.3 – 100 U/ml                        | 1 U/ml                        | 3                 | 100 µl              | serum, plasma  | TMB 450 nm |
| <b>Anti-Ovarian Ab</b>                     |                |          |       |                 |                                       |                               |                   |                     |                |            |
| ELISA                                      |                | DE2937   | 96    | 2 h 30 min      | 6 – 100 U/ml                          | -                             | 1                 | 50 µl               | serum          | TMB 450 nm |
| <b>Anti-Spermatozoa Antibody (ASA)</b>     |                |          |       |                 |                                       |                               |                   |                     |                |            |
| ELISA                                      |                | DE1021   | 96    | 2 h 30 min      | 31 – 250 U/ml                         | 3.74 U/ml                     | 1                 | 50 µl               | seminal plasma | TMB 450 nm |
| ELISA                                      |                | DE1020   | 96    | 2 h             | 31 – 250 U/ml                         | 8.553 U/ml                    | 1                 | 50 µl               | serum          | TMB 450 nm |
| <b>ASCA</b>                                |                |          |       |                 |                                       |                               |                   |                     |                |            |
| ELISA                                      | IgG/IgA        | DE7240   | 96    | 1 h 5 min       | 6.3 – 100 U/ml                        | 0.5 U/ml                      | 2                 | 100 µl              | serum, plasma  | TMB 450 nm |
| <b>beta2-Glycoprotein I Ab</b>             |                |          |       |                 |                                       |                               |                   |                     |                |            |
| ELISA                                      | IgG/IgM        | DE7260   | 96    | 1 h 5 min       | 6.3 – 100 U/ml                        | 0.5 U/ml                      | 2                 | 100 µl              | serum, plasma  | TMB 450 nm |
| <b>C1q Ab</b>                              |                |          |       |                 |                                       |                               |                   |                     |                |            |
| ELISA                                      |                | DE7280   | 96    | 1 h 5 min       | 6.3 – 100 U/ml                        | 0.5 U/ml                      | 2                 | 100 µl              | serum, plasma  | TMB 450 nm |
| <b>Cardiolipin Ab</b>                      |                |          |       |                 |                                       |                               |                   |                     |                |            |
| ELISA                                      | IgG/IgM        | DE7300   | 96    | 1 h 5 min       | IgG: 7.5–120 U/ml<br>IgM: 5 – 80 U/ml | IgG: 1 U/ml;<br>IgM: 0.5 U/ml | 2                 | 100 µl              | serum, plasma  | TMB 450 nm |
| <b>CCP Ab</b>                              |                |          |       |                 |                                       |                               |                   |                     |                |            |
| ELISA                                      |                | DE7760   | 96    | 1 h 5 min       | 20 - 1,000 U/ml                       | 1 U/ml                        | 2                 | 100 µl              | serum, plasma  | TMB 450 nm |
| <b>DGP Ab</b>                              |                |          |       |                 |                                       |                               |                   |                     |                |            |
| ELISA                                      | IgA            | DE7770   | 96    | 1 h 5 min       | 6.3 - 100 U/ml                        | 1 U/ml                        | 2                 | 100 µl              | serum, plasma  | TMB 450 nm |
| ELISA                                      | IgG            | DE7780   | 96    | 1 h 5 min       | 6.3 - 100 U/ml                        | 1 U/ml                        | 2                 | 100 µl              | serum, plasma  | TMB 450 nm |
| <b>ds-DNA Ab</b>                           |                |          |       |                 |                                       |                               |                   |                     |                |            |
| ELISA                                      | IgG            | DE7360   | 96    | 1 h 5 min       | 12.5 – 200 IU/ml                      | 1 IU/ml                       | 2                 | 100 µl              | serum, plasma  | TMB 450 nm |
| <b>ENA Combi</b>                           |                |          |       |                 |                                       |                               |                   |                     |                |            |
| ELISA                                      |                | DE7390   | 96    | 1 h 5 min       | 12.5 – 100 U/ml                       | 1 U/ml                        | -                 | 100 µl              | serum, plasma  | TMB 450 nm |
| <b>ENA Screen</b>                          |                |          |       |                 |                                       |                               |                   |                     |                |            |
| ELISA                                      |                | DE7420   | 96    | 1 h 5 min       | Cut-off                               | diagn. 92.7 %                 | -                 | 100 µl              | serum, plasma  | TMB 450 nm |
| <b>GBM Ab</b>                              |                |          |       |                 |                                       |                               |                   |                     |                |            |
| ELISA                                      |                | DE7130   | 96    | 1 h 5 min       | 20 – 200 U/ml                         | 1 U/ml                        | 2                 | 100 µl              | serum, plasma  | TMB 450 nm |
| <b>Insulin Ab</b>                          |                |          |       |                 |                                       |                               |                   |                     |                |            |
| ELISA                                      |                | DE7430   | 96    | 1 h 5 min       | 6.3 – 100 U/ml                        | 0.5 U/ml                      | 2                 | 100 µl              | serum, plasma  | TMB 450 nm |
| <b>Intrinsic Factor Ab</b>                 |                |          |       |                 |                                       |                               |                   |                     |                |            |
| ELISA                                      |                | DE7140   | 96    | 1 h 5 min       | 6.3 – 100 U/ml                        | 0.5 U/ml                      | 2                 | 100 µl              | serum, plasma  | TMB 450 nm |
| <b>Jo-1 Ab</b>                             |                |          |       |                 |                                       |                               |                   |                     |                |            |
| ELISA                                      |                | DE7440   | 96    | 1 h 5 min       | 12.5 – 200 U/ml                       | 1 U/ml                        | 2                 | 100 µl              | serum, plasma  | TMB 450 nm |
| <b>Parietal Cell Ab</b>                    |                |          |       |                 |                                       |                               |                   |                     |                |            |
| ELISA                                      |                | DE7450   | 96    | 1 h 5 min       | 6.3 – 100 U/ml                        | 0.5 U/ml                      | 2                 | 100 µl              | serum, plasma  | TMB 450 nm |

## Autoimmunity

| Method                            | Antibody class | Cat.-No. | Tests | Incubation time | Standard range  | Sensitivity | Internal controls | Final sample volume | Sample type   | Substrate  |
|-----------------------------------|----------------|----------|-------|-----------------|-----------------|-------------|-------------------|---------------------|---------------|------------|
| <b>Phospholipid Screen</b>        |                |          |       |                 |                 |             |                   |                     |               |            |
| ELISA                             | IgG/IgM        | DE7470   | 96    | 1 h 5 min       | 6.3 – 100 U/ml  | 0.5 U/ml    | 2                 | 100 µl              | serum, plasma | TMB 450 nm |
| <b>Rheumatoid Factor</b>          |                |          |       |                 |                 |             |                   |                     |               |            |
| ELISA                             | IgA            | DE7630   | 96    | 1 h 5 min       | 15 – 500 U/ml   | 1 U/ml      | 2                 | 100 µl              | serum, plasma | TMB 450 nm |
| ELISA                             | IgG            | DE7640   | 96    | 1 h 5 min       | 15 – 500 U/ml   | 1 U/ml      | 2                 | 100 µl              | serum, plasma | TMB 450 nm |
| ELISA                             | IgM            | DE7650   | 96    | 1 h 5 min       | 15 – 500 IU/ml  | 1 IU/ml     | 2                 | 100 µl              | serum, plasma | TMB 450 nm |
| <b>RNP 70 Ab</b>                  |                |          |       |                 |                 |             |                   |                     |               |            |
| ELISA                             |                | DE7490   | 96    | 1 h 5 min       | 12.5 – 200 U/ml | 1 U/ml      | 2                 | 100 µl              | serum, plasma | TMB 450 nm |
| <b>RNP/Sm Ab</b>                  |                |          |       |                 |                 |             |                   |                     |               |            |
| ELISA                             |                | DE7500   | 96    | 1 h 5 min       | 12.5 – 200 U/ml | 1 U/ml      | 2                 | 100 µl              | serum, plasma | TMB 450 nm |
| <b>Sci-70 Ab</b>                  |                |          |       |                 |                 |             |                   |                     |               |            |
| ELISA                             |                | DE7510   | 96    | 1 h 5 min       | 12.5 – 200 U/ml | 1 U/ml      | 2                 | 100 µl              | serum, plasma | TMB 450 nm |
| <b>Sm Ab</b>                      |                |          |       |                 |                 |             |                   |                     |               |            |
| ELISA                             |                | DE7520   | 96    | 1 h 5 min       | 12.5 – 200 U/ml | 1 U/ml      | 2                 | 100 µl              | serum, plasma | TMB 450 nm |
| <b>SS-A Ab</b>                    |                |          |       |                 |                 |             |                   |                     |               |            |
| ELISA                             |                | DE7550   | 96    | 1 h 5 min       | 12.5 – 200 U/ml | 1 U/ml      | 2                 | 100 µl              | serum, plasma | TMB 450 nm |
| <b>SS-B Ab</b>                    |                |          |       |                 |                 |             |                   |                     |               |            |
| ELISA                             |                | DE7560   | 96    | 1 h 5 min       | 12.5 – 200 U/ml | 1 U/ml      | 2                 | 100 µl              | serum, plasma | TMB 450 nm |
| <b>ss-DNA Ab</b>                  |                |          |       |                 |                 |             |                   |                     |               |            |
| ELISA                             |                | DE7570   | 96    | 1 h 5 min       | 12.5 – 200 U/ml | 1 U/ml      | 2                 | 100 µl              | serum, plasma | TMB 450 nm |
| <b>Tissue Transglutaminase Ab</b> |                |          |       |                 |                 |             |                   |                     |               |            |
| ELISA                             | IgA            | DE7720   | 96    | 1 h 5 min       | 5 – 200 U/ml    | 1 U/ml      | 2                 | 100 µl              | serum, plasma | TMB 450 nm |
| ELISA                             | IgG            | DE7730   | 96    | 1 h 5 min       | 5 – 200 U/ml    | 1 U/ml      | 2                 | 100 µl              | serum, plasma | TMB 450 nm |

## Bone Metabolism

Bone has well recognized mechanical functions: it provides rigidity and shape, protection and support for body structures, and aids locomotion. Contrary to popular belief, bone is in fact a highly dynamic structure undergoing constant remodelling. It is continuously characterized by resorption and adsorption as a part of bone metabolism. Bone metabolism includes the activity of several hormones, e. g. Parathyroid hormone (PTH) and Vitamin D. Therefore determination of these analytes is valuable for monitoring bone metabolism in a professional way.



| Method                            | Cat.-No.  | Tests | Incubation time | Standard range     | Sensitivity | Internal controls | Final sample volume | Sample type                        | Isotope / Substrate |
|-----------------------------------|-----------|-------|-----------------|--------------------|-------------|-------------------|---------------------|------------------------------------|---------------------|
| <b>25-OH Vitamin D total</b>      |           |       |                 |                    |             |                   |                     |                                    |                     |
| ELISA                             | DE1971    | 96    | 2 h 45 min      | 3.45 – 120 ng/ml   | 2.81 ng/ml  | 2                 | 50 µl               | serum                              | TMB 450 nm          |
| RIA                               | DER1971   | 96    | 3 h             | 6.78 – 96.1 ng/ml  | 1.9 ng/ml   | 2                 | 25 µl               | serum                              | I-125               |
| <b>Active PTHrP</b>               |           |       |                 |                    |             |                   |                     |                                    |                     |
| IRMA                              | DE8100    | 100   | 16 – 22 h       | 24 – 2,300 pg/ml   | 8.5 pg/ml   | 2                 | 200 µl              | plasma                             | I-125               |
| <b>Calcitonin</b>                 |           |       |                 |                    |             |                   |                     |                                    |                     |
| IRMA                              | DE16100   | 100   | 18 – 24 h       | 9.5 – 2,050 pg/ml  | 0.5 pg/ml   | 2                 | 100 µl              | serum                              | I-125               |
| <b>Calcitonin ultra sensitive</b> |           |       |                 |                    |             |                   |                     |                                    |                     |
| ELISA                             | DEKAP0421 | 96    | 18 h 30 min     | 7.5 – 573 pg/ml    | 1.3 pg/ml   | 2                 | 100 µl              | serum, plasma                      | TMB 450 nm          |
| <b>Ostase</b>                     |           |       |                 |                    |             |                   |                     |                                    |                     |
| IRMA                              | A44176    | 100   | 18 – 20 h       | 0 – 120 µg/l       | 1.75 µg/l   | 2                 | 100 µl              | serum                              | I-125               |
| <b>Osteopontin human</b>          |           |       |                 |                    |             |                   |                     |                                    |                     |
| ELISA                             | JP27158   | 96    | 2 h             | 5 – 320 ng/ml      | 3.33 ng/ml  | -                 | 100 µl              | urine, plasma, ccs                 | TMB 450 nm          |
| <b>Osteopontin N-half human</b>   |           |       |                 |                    |             |                   |                     |                                    |                     |
| ELISA                             | JP27258   | 96    | 2 h             | 6.25 – 400 pmol/l  | 3 pmol/l    | -                 | 100 µl              | urine, plasma, ccs, synovial fluid | TMB 450 nm          |
| <b>PTH intact</b>                 |           |       |                 |                    |             |                   |                     |                                    |                     |
| ELISA                             | DE3645    | 96    | 3 h 30 min      | 14.2 – 1,094 pg/ml | 0.2 pg/ml   | 2                 | 25 µl               | serum                              | TMB 450 nm          |
| IRMA                              | A11930    | 100   | 2 h 45 min      | 20 – 2,575 pg/ml   | 4.89 pg/ml  | 2                 | 200 µl              | serum, plasma                      | I-125               |
| IRMA                              | B89461    | 50    | 2 h 45 min      | 0 – 2,500 pg/ml    | 4.89 pg/ml  | 2                 | 200 µl              | serum, plasma                      | I-125               |



Immunology is a branch of biomedical science that covers the study of all aspects of the immune system in all organisms. It deals with the physiological functioning of the immune system in states of both health and diseases, malfunctions of the immune system in immunological disorders.

Topseller of this product group in combination with other inflammatory and fertility markers: PMN-Elastase ELISA.

| Method  | Cat.-No. | Tests | Incubation time        | Standard range      | Sensitivity | Internal controls | Final sample volume | Sample type  | Substrate  |
|---|----------|-------|------------------------|---------------------|-------------|-------------------|---------------------|--|------------|
| <b>alpha2, 6-Sialyltransferase</b>              |          |       |                        |                     |             |                   |                     |  |            |
| ELISA   | JP27762  | 96    | 2 h                    | 1 - 70 ng/ml        | 0.2 ng/ml   | -                 | 100 µl              | serum, plasma, ccs                                   | TMB 450 nm |
| <b>alpha-Synuclein human</b>                    |          |       |                        |                     |             |                   |                     |  |            |
| ELISA   | JP27740  | 96    | overnight + 1 h 30 min | 0.16 - 10 ng/ml     | 0.03 ng/ml  | -                 | 100 µl              | serum, plasma, CSF, ccs                              | TMB 450 nm |
| <b>Amyloid beta (1-38) high sensitive human</b> |          |       |                        |                     |             |                   |                     |  |            |
| ELISA   | JP27717  | 96    | overnight + 1 h 30 min | 9.38 - 600 pg/ml    | 1.28 pg/ml  | -                 | 100 µl              | CSF, ccs   | TMB 450 nm |
| <b>Amyloid beta (1-42) high sensitive</b>       |          |       |                        |                     |             |                   |                     |  |            |
| ELISA   | JP27719  | 96    | overnight + 1 h 30 min | 1.56 - 100 pg/ml    | 0.29 pg/ml  | -                 | 100 µl              | plasma, CSF, ccs                                     | TMB 450 nm |
| <b>Amyloid beta (1-43) (FL) human</b>           |          |       |                        |                     |             |                   |                     |  |            |
| ELISA   | JP27710  | 96    | overnight + 1 h 30 min | 2.34 - 150 pg/ml    | -           | -                 | 100 µl              | brain extract of Tg mouse, ccs, CSF                  | TMB 450 nm |
| <b>Amyloid beta (1-x) human</b>                 |          |       |                        |                     |             |                   |                     |  |            |
| ELISA   | JP27729  | 96    | overnight + 1 h 30 min | 7.81 - 500 pg/ml    | 3.55 pg/ml  | -                 | 100 µl              | plasma, CSF, serum, ccs, brain tissue extracts       | TMB 450 nm |
| <b>Amyloid beta (N3pE-40) human</b>             |          |       |                        |                     |             |                   |                     |  |            |
| ELISA   | JP27418  | 96    | overnight + 1 h 30 min | 3.13 - 200 pg/ml    | 0.31 pg/ml  | -                 | 100 µl              | brain tissue extract                                 | TMB 450 nm |
| <b>Amyloid beta (n3pE-42) human</b>             |          |       |                        |                     |             |                   |                     |  |            |
| ELISA   | JP27716  | 96    | overnight + 1 h 30 min | 7.75 - 496 pg/ml    | 1.94 pg/ml  | -                 | 100 µl              | brain tissue extract, serum, plasma                  | TMB 450 nm |
| <b>Amyloid beta (x-40) human</b>                |          |       |                        |                     |             |                   |                     |  |            |
| ELISA   | JP27713  | 96    | overnight + 1 h 30 min | 7.81 - 500 pg/ml    | 5 pg/ml     | -                 | 100 µl              | serum, plasma, CSF, ccs, brain tissue extract        | TMB 450 nm |
| <b>Amyloid beta (x-42) human</b>                |          |       |                        |                     |             |                   |                     |  |            |
| ELISA   | JP27711  | 96    | overnight + 1 h 30 min | 12.5 - 800 pg/ml    | 4.03 pg/ml  | -                 | 100 µl              | CSF, ccs, brain tissue extract                       | TMB 450 nm |
| <b>Amyloid-beta (1-40) High Sensitive</b>       |          |       |                        |                     |             |                   |                     |  |            |
| ELISA   | JP27718  | 96    | overnight + 1 h 30 min | 1.56 - 100 pg/ml    | 1 pg/ml     | -                 | 100 µl              | serum, plasma, CSF, ccs, brain tissue extract        | TMB 450 nm |
| <b>Angiotensin-like 3</b>                       |          |       |                        |                     |             |                   |                     |  |            |
| ELISA   | JP27750  | 96    | 2 h                    | 0.47 - 30 ng/ml     | 0.08 ng/ml  | -                 | 100 µl              | serum, plasma, ccs                                   | TMB 450 nm |
| <b>Angiotensin-like 4 human</b>                 |          |       |                        |                     |             |                   |                     |  |            |
| ELISA   | JP27749  | 96    | 2 h                    | 23.44 - 1,500 pg/ml | 17 pg/ml    | -                 | 100 µl              | serum, plasma, ccs                                   | TMB 450 nm |
| <b>ANGPTL2 human</b>                            |          |       |                        |                     |             |                   |                     |  |            |
| ELISA   | JP27745  | 96    | 1 h 30 min             | 0.05 - 3.5 ng/ml    | 0.01 ng/ml  | -                 | 100 µl              | serum, plasma, ccs                                   | TMB 450 nm |
| <b>APP beta CTF</b>                             |          |       |                        |                     |             |                   |                     |  |            |
| ELISA   | JP27776  | 96    | 1 d 1 h 30 min         | 0.19 - 12 pmol/l    | 0.02 pmol/l | -                 | 100 µl              | cell lysate  | TMB 450 nm |
| <b>APP770 human</b>                             |          |       |                        |                     |             |                   |                     |  |            |
| ELISA   | JP27736  | 96    | overnight + 30 min     | 0.1 - 6.2 ng/ml     | 0.03 ng/ml  | -                 | 100 µl              | plasma, CSF, ccs, brain extract, cell culture lysate | TMB 450 nm |
| <b>BACE 1</b>                                   |          |       |                        |                     |             |                   |                     |  |            |
| ELISA   | JP27752  | 96    | 2 h                    | 1.56 - 100 ng/ml    | 0.16 ng/ml  | -                 | 100 µl              | cell culture lysate                                  | TMB 450 nm |
| <b>c-Met human</b>                              |          |       |                        |                     |             |                   |                     |  |            |
| ELISA   | JP27407  | 96    | 2 h                    | 0.78 - 50 ng/ml     | 0.26 ng/ml  | -                 | 100 µl              | serum, plasma, ccs                                   | TMB 450 nm |
| <b>COX-2 human</b>                              |          |       |                        |                     |             |                   |                     |  |            |
| ELISA   | JP27186  | 96    | 2 h                    | 2.15 - 275 ng/ml    | 2 ng/ml     | -                 | 100 µl              | lysate of cell pellet                                | TMB 450 nm |
| <b>Endothelial Lipase (EL) human</b>            |          |       |                        |                     |             |                   |                     |  |            |
| ELISA   | JP27182  | 96    | overnight + 1 h        | 31.3 - 2,000 pg/ml  | 5.7 pg/ml   | -                 | 100 µl              | serum, plasma, ccs                                   | TMB 450 nm |
| <b>Endothelin-1</b>                             |          |       |                        |                     |             |                   |                     |  |            |
| ELISA   | JP17165A | 96    | overnight + 1 h        | 0.78 - 100 pg/ml    | 0.39 pg/ml  | -                 | 100 µl              | serum, plasma, ccs, tissue extract                   | TMB 450 nm |
| <b>FGF19 human</b>                              |          |       |                        |                     |             |                   |                     |  |            |
| ELISA   | JP27996  | 96    | overnight + 1 h        | 23.4 - 1,500 pg/ml  | 7.2 pg/ml   | -                 | 100 µl              | plasma, ccs  | TMB 450 nm |

| Method  | Cat.-No. | Tests | Incubation time        | Standard range        | Sensitivity  | Internal controls | Final sample volume | Sample type                                  | Substrate  |
|---|----------|-------|------------------------|-----------------------|--------------|-------------------|---------------------|--|------------|
| <b>FGF21 human</b>                                  |          |       |                        |                       |              |                   |                     |  |            |
| ELISA   | JP27997  | 96    | overnight + 1h         | 31.3 – 2,000 pg/ml    | 29.4 pg/ml   | -                 | 100 µl              | serum, plasma, ccs                           | TMB 450 nm |
| <b>Galectin-3</b>                                   |          |       |                        |                       |              |                   |                     |  |            |
| ELISA   | JP27755  | 96    | 2 h                    | 117 – 7,500 pg/ml     | 44 pg/ml     | -                 | 100 µl              | lysates of cell cultures, clinical specimens | TMB 450 nm |
| <b>G-CSF human</b>                                  |          |       |                        |                       |              |                   |                     |  |            |
| ELISA   | JP27131  | 96    | 1 d 3 h                | 1.95 – 500 pg/ml      | 1.23 pg/ml   | -                 | 100 µl              | serum, plasma, ccs                           | TMB 450 nm |
| <b>GIP Active form human</b>                        |          |       |                        |                       |              |                   |                     |  |            |
| ELISA   | JP27201  | 96    | 2 h 30 min             | 1.6 – 100 pg/ml       | 1.2 pg/ml    | -                 | 100 µl              | plasma                                       | TMB 450 nm |
| <b>GIP Total human</b>                              |          |       |                        |                       |              |                   |                     |  |            |
| ELISA   | JP27203  | 96    | 2 h 30 min             | 1.88 – 120 pmol/l     | 0.82 pmol/l  | -                 | 100 µl              | plasma, ccs                                  | TMB 450 nm |
| <b>GLP-1 inactive form</b>                          |          |       |                        |                       |              |                   |                     |  |            |
| ELISA   | JP27788  | 96    | 2 h 30 min             | 1.25 – 80 pmol/l      | 0.36 pmol/l  | -                 | 100 µl              | plasma, ccs                                  | TMB 450 nm |
| <b>hAPL1 beta28</b>                                 |          |       |                        |                       |              |                   |                     |  |            |
| ELISA   | JP27739  | 96    | overnight + 1h         | 46.88 – 3,000 pg/ml   | 3.18 pg/ml   | -                 | 100 µl              | CSF, ccs                                     | TMB 450 nm |
| <b>HB-EGF human</b>                                 |          |       |                        |                       |              |                   |                     |  |            |
| ELISA   | JP27189  | 96    | overnight + 1 h 30 min | 0.34 – 22 nmol/l      | 0.048 nmol/l | -                 | 100 µl              | plasma, urine, CSF, ccs                      | TMB 450 nm |
| <b>Human Amyloid beta Oligomers (82E1-specific)</b> |          |       |                        |                       |              |                   |                     |  |            |
| ELISA   | JP27725  | 96    | 2 h 30 min             | 18.98 – 1,215 pmol/l  | 4.41 pmol/l  | -                 | 100 µl              | serum, plasma, brain tissue extract          | TMB 450 nm |
| <b>Human Big Endothelin-1</b>                       |          |       |                        |                       |              |                   |                     |  |            |
| ELISA   | JP27168  | 96    | 1 d 1 h                | 0.78 – 100 pg/ml      | 0.3 pg/ml    | -                 | 100 µl              | serum, plasma, ccs, tissue extract           | TMB 450 nm |
| <b>Human GRO beta</b>                               |          |       |                        |                       |              |                   |                     |  |            |
| ELISA   | JP27142  | 96    | 1 d 1 h                | 19.53 – 2,500 pg/ml   | 2.93 pg/ml   | -                 | 100 µl              | serum, ccs                                   | TMB 450 nm |
| <b>Human Total HGF</b>                              |          |       |                        |                       |              |                   |                     |  |            |
| ELISA   | JP27402  | 96    | 2 h                    | 78 – 5,000 pg/ml      | 11 pg/ml     | -                 | 100 µl              | serum, plasma, ccs                           | TMB 450 nm |
| <b>IFN-gamma human</b>                              |          |       |                        |                       |              |                   |                     |  |            |
| ELISA   | DE4434   | 96    | 2 h 15 min             | 0.51 – 21.2 IU/ml     | 0.03 IU/ml   | 2                 | 50 µl               | serum, plasma                                | TMB 450 nm |
| <b>Intelectin-1/Omentin-1 human</b>                 |          |       |                        |                       |              |                   |                     |  |            |
| ELISA   | JP27361  | 96    | 2 h                    | 0.31 – 20 ng/ml       | 0.23 ng/ml   | -                 | 100 µl              | serum, plasma, ccs                           | TMB 450 nm |
| <b>Interleukin-10 human</b>                         |          |       |                        |                       |              |                   |                     |  |            |
| ELISA   | DE4699   | 96    | 4 h 30 min             | 13.3 – 1,925 pg/ml    | 1.6 pg/ml    | 2                 | 100 µl              | serum  | TMB 450 nm |
| <b>Interleukin-1beta human</b>                      |          |       |                        |                       |              |                   |                     |  |            |
| ELISA   | DE4437   | 96    | 2 h 15 min             | 15.8 – 589 pg/ml      | 0.35 pg/ml   | 2                 | 200 µl              | serum, plasma                                | TMB 450 nm |
| <b>Interleukin-6 human</b>                          |          |       |                        |                       |              |                   |                     |  |            |
| ELISA   | DE4640   | 96    | 2 h 15 min             | 19.5 – 2,369 pg/ml    | 2 pg/ml      | 2                 | 100 µl              | serum  | TMB 450 nm |
| <b>Interleukin-8 human</b>                          |          |       |                        |                       |              |                   |                     |  |            |
| ELISA   | DE4700   | 96    | 2 h 30 min             | 36.6 – 1,635 pg/ml    | 1.1 pg/ml    | 2                 | 100 µl              | plasma                                       | TMB 450 nm |
| <b>LRG</b>  |          |       |                        |                       |              |                   |                     |  |            |
| ELISA   | JP27769  | 96    | 21 h                   | 195.31 – 12,500 pg/ml | 170 pg/ml    | -                 | 100 µl              | serum, plasma, urine, CSF                    | TMB 450 nm |
| <b>Mac2BP human</b>                                 |          |       |                        |                       |              |                   |                     |  |            |
| ELISA   | JP27362  | 96    | 2 h                    | 0.78 – 100 ng/ml      | 0.08 ng/ml   | -                 | 20 µl               | serum, plasma, ccs                           | TMB 450 nm |
| <b>Napsin A</b>                                     |          |       |                        |                       |              |                   |                     |  |            |
| ELISA   | JP27758  | 96    | 1 d 1 h                | 3.91 – 250 ng/ml      | 2.92 ng/ml   | -                 | 100 µl              | serum, ccs, urine                            | TMB 450 nm |
| <b>N-ERC/Mesothelin human</b>                       |          |       |                        |                       |              |                   |                     |  |            |
| ELISA   | JP27190  | 96    | 2 h                    | 0.07 – 4.4 ng/ml      | 0.017 ng/ml  | -                 | 100 µl              | plasma                                       | TMB 450 nm |
| <b>PMN Elastase</b>                                 |          |       |                        |                       |              |                   |                     |  |            |
| ELISA   | DEH3311  | 96    | 2 h 30 min             | 0.16 – 10 ng/ml       | 0.1 ng/ml    | 2                 | 100 µl              | plasma, seminal plasma                       | TMB 450 nm |
| <b>sAPP alpha (highly sensitive) human</b>          |          |       |                        |                       |              |                   |                     |  |            |
| ELISA   | JP27734  | 96    | 1 d 1 h                | 0.78 – 50 ng/ml       | 0.09 ng/ml   | -                 | 100 µl              | serum, plasma, CSF, ccs                      | TMB 450 nm |
| <b>sAPP beta-Swedish Type human</b>                 |          |       |                        |                       |              |                   |                     |  |            |
| ELISA   | JP27733  | 96    | 1 d 1 h                | 0.39 – 25 ng/ml       | 0.07 ng/ml   | -                 | 100 µl              | plasma, ccs, tissue extract                  | TMB 450 nm |
| <b>sAPP beta-w (highly sensitive) human</b>         |          |       |                        |                       |              |                   |                     |  |            |
| ELISA   | JP27732  | 96    | 1 d 1 h                | 0.78 – 50 ng/ml       | 0.05 ng/ml   | -                 | 100 µl              | plasma, CSF, ccs                             | TMB 450 nm |
| <b>sAPP total human</b>                             |          |       |                        |                       |              |                   |                     |  |            |
| ELISA   | JP27731  | 96    | 1 d 1 h                | 0.39 – 25 ng/ml       | 0.6 ng/ml    | -                 | 100 µl              | serum, plasma, CSF, ccs                      | TMB 450 nm |
| <b>SCF</b>  |          |       |                        |                       |              |                   |                     |  |            |
| ELISA   | JP27141  | 96    | 2 h                    | 50 – 3,200 pg/ml      | 7 pg/ml      | -                 | 100 µl              | ccs  | TMB 450 nm |
| <b>soluble (Pro)renin Receptor</b>                  |          |       |                        |                       |              |                   |                     |  |            |
| ELISA   | JP27782  | 96    | overnight + 1 h        | 125 – 8,000 pg/ml     | 24 pg/ml     | -                 | 100 µl              | serum, plasma, urine, ccs                    | TMB 450 nm |
| <b>Syndecan-4</b>                                   |          |       |                        |                       |              |                   |                     |  |            |
| ELISA   | JP27188  | 96    | 2 h                    | 20 – 1,280 pg/ml      | 3.94 pg/ml   | -                 | 100 µl              | serum, plasma, ccs                           | TMB 450 nm |
| <b>Tenascin-C Large (FNIII-B)</b>                   |          |       |                        |                       |              |                   |                     |  |            |
| ELISA   | JP27767  | 96    | 2 h                    | 0.2 – 12.5 ng/ml      | 44 pg/ml     | -                 | 100 µl              | serum, plasma, ccs                           | TMB 450 nm |
| <b>Tenascin-C Large (FNIII-C)</b>                   |          |       |                        |                       |              |                   |                     |  |            |
| ELISA   | JP27751  | 96    | 2 h                    | 0.38 – 24 ng/ml       | 0.1 ng/ml    | -                 | 100 µl              | serum, plasma, ccs                           | TMB 450 nm |
| <b>Thioredoxin</b>                                  |          |       |                        |                       |              |                   |                     |  |            |
| ELISA   | JP27417  | 96    | 2 h                    | 3.9 – 250 ng/ml       | 0.43 ng/ml   | -                 | 100 µl              | serum, plasma, ccs, urine                    | TMB 450 nm |
| <b>TNF-alpha human</b>                              |          |       |                        |                       |              |                   |                     |  |            |
| ELISA   | DE4641   | 96    | 4 h 15 min             | 5.35 – 530 pg/ml      | 0.7 pg/ml    | 2                 | 200 µl              | serum  | TMB 450 nm |
| <b>VEGF human</b>                                   |          |       |                        |                       |              |                   |                     |  |            |
| ELISA   | JP27171  | 96    | 2 h                    | 15.63 – 1,000 pg/ml   | 1 pg/ml      | -                 | 100 µl              | plasma, ccs                                  | TMB 450 nm |
| <b>VEGF-C</b>                                       |          |       |                        |                       |              |                   |                     |  |            |
| ELISA   | JP27756  | 96    | 2 h                    | 93.75 – 6,000 pg/ml   | 12 pg/ml     | -                 | 100 µl              | plasma, ccs                                  | TMB 450 nm |
| <b>VEGFR-3/Flt-4</b>                                |          |       |                        |                       |              |                   |                     |  |            |
| ELISA   | JP27779  | 96    | 1 h 30 min             | 30 – 2,000 pg/ml      | 4 pg/ml      | -                 | 100 µl              | plasma, ccs                                  | TMB 450 nm |

# Infectious Disease

For the detection of human IgA, IgG and IgM antibodies against bacterial, viral, fungal and protozoal antigens, we offer a wide range of infectious disease ELISAs. Their results can identify an active disease, an immunestatus or even re-infections.

| Method                                     | Antibody class | Cat.-No.    | Tests | Incubation time | Standard range | Sensitivity             | Final sample volume | Sample type        | Substrate  |
|--|----------------|-------------|-------|-----------------|----------------|-------------------------|---------------------|--------------------|------------|
| <b>Adenovirus</b>                          |                |             |       |                 |                |                         |                     |                    |            |
| ELISA                                      | IgG            | DEADVG0010  | 96    | 1 h 45 min      | Cut-off        | diagn. 100 %            | 100 µl              | serum, plasma      | TMB 450 nm |
| ELISA                                      | IgM            | DEADVM0010  | 96    | 1 h 45 min      | Cut-off        | diagn. 90 %             | 100 µl              | serum, plasma      | TMB 450 nm |
| <b>Ascaris lumbricoides</b>                |                |             |       |                 |                |                         |                     |                    |            |
| ELISA                                      | IgG            | DEASCG0020  | 96    | 1 h 45 min      | Cut-off        | diagn. 100 %            | 100 µl              | serum, plasma      | TMB 450 nm |
| <b>Aspergillus fumigatus</b>               |                |             |       |                 |                |                         |                     |                    |            |
| ELISA                                      | IgG            | DEASPG0680  | 96    | 1 h 45 min      | Cut-off        | diagn. 100 %            | 100 µl              | serum, plasma      | TMB 450 nm |
| ELISA                                      | IgM            | DEASPM0680  | 96    | 1 h 45 min      | Cut-off        | diagn. 90.91 %          | 100 µl              | serum, plasma      | TMB 450 nm |
| <b>Bordetella pertussis</b>                |                |             |       |                 |                |                         |                     |                    |            |
| ELISA                                      | IgG            | DEBOPG0030  | 96    | 1 h 45 min      | Cut-off        | diagn. 98.31 %          | 100 µl              | serum, plasma      | TMB 450 nm |
| ELISA                                      | IgM            | DEBOPM0030  | 96    | 1 h 45 min      | Cut-off        | diagn. 89.19 %          | 100 µl              | serum, plasma      | TMB 450 nm |
| <b>Borrelia burgdorferi</b>                |                |             |       |                 |                |                         |                     |                    |            |
| ELISA                                      | IgG            | DEBORG0040  | 96    | 1 h 45 min      | Cut-off        | diagn. 98.39 %          | 100 µl              | serum, plasma, CSF | TMB 450 nm |
| ELISA                                      | IgM            | DEBORM0040  | 96    | 1 h 45 min      | Cut-off        | diagn. 92.45 %          | 100 µl              | serum, plasma, CSF | TMB 450 nm |
| <b>Brucella</b>                            |                |             |       |                 |                |                         |                     |                    |            |
| ELISA                                      | IgG            | DEBRUG0050  | 96    | 1 h 45 min      | Cut-off        | diagn. 100 %            | 100 µl              | serum, plasma      | TMB 450 nm |
| ELISA                                      | IgM            | DEBRUM0050  | 96    | 1 h 45 min      | Cut-off        | diagn. 100 %            | 100 µl              | serum, plasma      | TMB 450 nm |
| <b>Candida albicans</b>                    |                |             |       |                 |                |                         |                     |                    |            |
| ELISA                                      | IgG            | DECANG0060  | 96    | 1 h 45 min      | Cut-off        | diagn. 96.67 %          | 100 µl              | serum, plasma      | TMB 450 nm |
| ELISA                                      | IgM            | DECANM0060  | 96    | 1 h 45 min      | Cut-off        | diagn. 100 %            | 100 µl              | serum, plasma      | TMB 450 nm |
| <b>Chagas (Trypanosoma cruzi)</b>          |                |             |       |                 |                |                         |                     |                    |            |
| ELISA                                      | IgG            | DENO0114    | 96    | 1 h 45 min      | Cut-off        | diagn. 100 %            | 100 µl              | serum, plasma      | TMB 450 nm |
| <b>Chlamydia pneumoniae</b>                |                |             |       |                 |                |                         |                     |                    |            |
| ELISA                                      | IgA            | CHLA0510    | 96    | 1 h 45 min      | Cut-off        | diagn. 91.89 %          | 100 µl              | serum, plasma      | TMB 450 nm |
| ELISA                                      | IgG            | CHLG0510    | 96    | 1 h 45 min      | Cut-off        | diagn. 91.67 %          | 100 µl              | serum, plasma      | TMB 450 nm |
| ELISA                                      | IgM            | CHLM0510    | 96    | 1 h 45 min      | Cut-off        | diagn. 100 %            | 100 µl              | serum, plasma      | TMB 450 nm |
| <b>Chlamydia trachomatis</b>               |                |             |       |                 |                |                         |                     |                    |            |
| ELISA                                      | IgA            | CHLA0070    | 96    | 1 h 45 min      | Cut-off        | diagn. 100 %            | 100 µl              | serum, plasma      | TMB 450 nm |
| ELISA                                      | IgG            | CHLG0070    | 96    | 1 h 45 min      | Cut-off        | diagn. 97.33 %          | 100 µl              | serum, plasma      | TMB 450 nm |
| ELISA                                      | IgM            | CHLM0070    | 96    | 1 h 45 min      | Cut-off        | diagn. 88.89 %          | 100 µl              | serum, plasma      | TMB 450 nm |
| <b>Clostridium tetani toxin</b>            |                |             |       |                 |                |                         |                     |                    |            |
| ELISA                                      | IgG            | DETTG0430   | 96    | 1 h 45 min      | 0.1 - 1 IU/ml  | 0.01 IU/ml              | 100 µl              | serum, plasma      | TMB 450 nm |
| <b>Corynebacterium diphtheriae toxin</b>   |                |             |       |                 |                |                         |                     |                    |            |
| ELISA                                      | IgG            | DECORG0090  | 96    | 1 h 45 min      | 0 - 0.15 IU/ml | 0.00092 IU/ml           | 100 µl              | serum, plasma      | TMB 450 nm |
| <b>COVID-19 (SARS-CoV-2)</b>               |                |             |       |                 |                |                         |                     |                    |            |
| ELISA                                      | IgG            | DECOV1901   | 96    | 1 h 45 min      | Cut-off        | diagn. 100 % (>12 days) | 100 µl              | serum, plasma      | TMB 450 nm |
| ELISA                                      | IgA            | DECOV1902   | 96    | 1 h 45 min      | Cut-off        | diagn. 100 % (>12 days) | 100 µl              | serum, plasma      | TMB 450 nm |
| <b>COVID-19 (SARS-CoV-2) quantitative</b>  |                |             |       |                 |                |                         |                     |                    |            |
| ELISA                                      | IgG            | DECOV1901Q  | 96    | 1 h 30 min      | 43 - 690 IU/ml | 3.6 AU/ml               | 100 µl              | serum, plasma      | TMB 450 nm |
| <b>Coxiella burnetii (Q-Fever) Phase 1</b> |                |             |       |                 |                |                         |                     |                    |            |
| ELISA                                      | IgG            | DECOX1G0600 | 96    | 1 h 45 min      | Cut-off        | diagn. 100 %            | 100 µl              | serum, plasma      | TMB 450 nm |
| <b>Coxiella burnetii (Q-Fever) Phase 2</b> |                |             |       |                 |                |                         |                     |                    |            |
| ELISA                                      | IgG            | DECOX2G0600 | 96    | 1 h 45 min      | Cut-off        | diagn. 100 %            | 100 µl              | serum, plasma      | TMB 450 nm |
| <b>Cytomegalovirus (CMV)</b>               |                |             |       |                 |                |                         |                     |                    |            |
| ELISA                                      | IgG            | CMVG0110    | 96    | 1 h 45 min      | Cut-off        | diagn. 99.25 %          | 100 µl              | serum, plasma      | TMB 450 nm |
| ELISA                                      | IgM            | CMVM0110    | 96    | 1 h 45 min      | Cut-off        | diagn. 94.34 %          | 100 µl              | serum, plasma      | TMB 450 nm |
| <b>Dengue Virus</b>                        |                |             |       |                 |                |                         |                     |                    |            |
| ELISA                                      | IgG            | DENG0120    | 96    | 1 h 45 min      | Cut-off        | diagn. 100 %            | 100 µl              | serum, plasma      | TMB 450 nm |
| ELISA                                      | IgM            | DENM0120    | 96    | 1 h 45 min      | Cut-off        | diagn. 91.84 %          | 100 µl              | serum, plasma      | TMB 450 nm |
| <b>Echinococcus</b>                        |                |             |       |                 |                |                         |                     |                    |            |
| ELISA                                      | IgG            | DEECHG0130  | 96    | 1 h 45 min      | Cut-off        | diagn. 97.22 %          | 100 µl              | serum, plasma      | TMB 450 nm |
| <b>Entamoeba histolytica</b>               |                |             |       |                 |                |                         |                     |                    |            |
| ELISA                                      | IgG            | DEENTG0140  | 96    | 1 h 45 min      | Cut-off        | diagn. 100 %            | 100 µl              | serum, plasma      | TMB 450 nm |
| <b>Epstein-Barr Virus (EBNA-1)</b>         |                |             |       |                 |                |                         |                     |                    |            |
| ELISA                                      | IgG            | DE4246      | 96    | 1 h 45 min      | 0.62 - 60 U/ml | 0.62 U/ml               | 100 µl              | serum, plasma      | TMB 450 nm |
| ELISA                                      | IgM            | DE4247      | 96    | 1 h 45 min      | 0.69 - 60 U/ml | 0.69 U/ml               | 100 µl              | serum, plasma      | TMB 450 nm |

| Method                                | Antibody class | Cat.-No.    | Tests | Incubation time | Standard range | Sensitivity    | Final sample volume | Sample type   | Substrate  |
|---------------------------------------|----------------|-------------|-------|-----------------|----------------|----------------|---------------------|---------------|------------|
| <b>Epstein-Barr Virus (VCA)</b>       |                |             |       |                 |                |                |                     |               |            |
| ELISA                                 | IgA            | DEEBVA0150  | 96    | 1 h 45 min      | Cut-off        | diagn. 100 %   | 100 µl              | serum, plasma | TMB 450 nm |
| ELISA                                 | IgG            | DEEBVG0150  | 96    | 1 h 45 min      | Cut-off        | diagn. 100 %   | 100 µl              | serum, plasma | TMB 450 nm |
| ELISA                                 | IgM            | DEEBVM0150  | 96    | 1 h 45 min      | Cut-off        | diagn. 94.59 % | 100 µl              | serum, plasma | TMB 450 nm |
| <b>Giardia lamblia</b>                |                |             |       |                 |                |                |                     |               |            |
| ELISA                                 |                | DE610001    | 96    | 1 h 40 min      | Cut-off        | -              | 50 µl               | stool         | TMB 450 nm |
| <b>Helicobacter pylori</b>            |                |             |       |                 |                |                |                     |               |            |
| ELISA                                 | IgG            | DEHELG0220  | 96    | 1 h 45 min      | 0 – 150 U/ml   | 1.39 U/ml      | 100 µl              | serum, plasma | TMB 450 nm |
| <b>Herpes simplex Virus 1 (HSV 1)</b> |                |             |       |                 |                |                |                     |               |            |
| ELISA                                 | IgG            | DEHSV1G0500 | 96    | 1 h 45 min      | Cut-off        | diagn. 99.52 % | 100 µl              | serum, plasma | TMB 450 nm |
| ELISA                                 | IgM            | DEHSV1M0500 | 96    | 1 h 45 min      | Cut-off        | diagn. 94.44 % | 100 µl              | serum, plasma | TMB 450 nm |
| <b>Herpes simplex Virus 1+2 (HSV)</b> |                |             |       |                 |                |                |                     |               |            |
| ELISA                                 | IgG            | DEHSV2G0250 | 96    | 1 h 45 min      | Cut-off        | diagn. 100 %   | 100 µl              | serum, plasma | TMB 450 nm |
| ELISA                                 | IgM            | DEHSV2M0250 | 96    | 1 h 45 min      | Cut-off        | diagn. 100 %   | 100 µl              | serum, plasma | TMB 450 nm |
| <b>Herpes simplex Virus 2 (HSV 2)</b> |                |             |       |                 |                |                |                     |               |            |
| ELISA                                 | IgG            | DEHSV2G0540 | 96    | 1 h 45 min      | Cut-off        | diagn. 99.31 % | 100 µl              | serum, plasma | TMB 450 nm |
| ELISA                                 | IgM            | DEHSV2M0540 | 96    | 1 h 45 min      | Cut-off        | diagn. 100 %   | 100 µl              | serum, plasma | TMB 450 nm |
| <b>Influenza Virus A</b>              |                |             |       |                 |                |                |                     |               |            |
| ELISA                                 | IgG            | DEINFG0290  | 96    | 1 h 45 min      | Cut-off        | diagn. 98.55 % | 100 µl              | serum, plasma | TMB 450 nm |
| <b>Influenza Virus B</b>              |                |             |       |                 |                |                |                     |               |            |
| ELISA                                 | IgG            | DEINFG0300  | 96    | 1 h 45 min      | Cut-off        | diagn. 100 %   | 100 µl              | serum, plasma | TMB 450 nm |
| <b>Legionella pneumophila</b>         |                |             |       |                 |                |                |                     |               |            |
| ELISA                                 | IgG            | DELEGG0650  | 96    | 1 h 45 min      | Cut-off        | diagn. 90 %    | 100 µl              | serum, plasma | TMB 450 nm |
| ELISA                                 | IgM            | DELEGM0650  | 96    | 1 h 45 min      | Cut-off        | diagn. 96 %    | 100 µl              | serum, plasma | TMB 450 nm |
| <b>Leishmania infantum</b>            |                |             |       |                 |                |                |                     |               |            |
| ELISA                                 | IgG            | DEIG0310    | 96    | 1 h 45 min      | Cut-off        | diagn. 90.91 % | 100 µl              | serum, plasma | TMB 450 nm |
| <b>Measles Virus</b>                  |                |             |       |                 |                |                |                     |               |            |
| ELISA                                 | IgG            | DEMEAG0330  | 96    | 1 h 45 min      | Cut-off        | diagn. 97.01 % | 100 µl              | serum, plasma | TMB 450 nm |
| ELISA                                 | IgM            | DEMEAM0330  | 96    | 1 h 45 min      | Cut-off        | diagn. 100 %   | 100 µl              | serum, plasma | TMB 450 nm |
| <b>Mumps Virus</b>                    |                |             |       |                 |                |                |                     |               |            |
| ELISA                                 | IgG            | DEMUMG0340  | 96    | 1 h 45 min      | Cut-off        | diagn. 93.55 % | 100 µl              | serum, plasma | TMB 450 nm |
| ELISA                                 | IgM            | DEMUMM0340  | 96    | 1 h 45 min      | Cut-off        | diagn. 97.68 % | 100 µl              | serum, plasma | TMB 450 nm |
| <b>Mycoplasma pneumoniae</b>          |                |             |       |                 |                |                |                     |               |            |
| ELISA                                 | IgG            | DEMYCG0350  | 96    | 1 h 45 min      | Cut-off        | diagn. 100 %   | 100 µl              | serum, plasma | TMB 450 nm |
| ELISA                                 | IgA            | DEMYCA0350  | 96    | 1 h 45 min      | Cut-off        | diagn. 100 %   | 100 µl              | serum, plasma | TMB 450 nm |
| ELISA                                 | IgM            | DEMYCM0350  | 96    | 1 h 45 min      | Cut-off        | diagn. 100 %   | 100 µl              | serum, plasma | TMB 450 nm |
| <b>Parvovirus B19</b>                 |                |             |       |                 |                |                |                     |               |            |
| ELISA                                 | IgG            | DE3503      | 96    | 1 h 45 min      | Cut-off        | 0.59 DU/ml     | 100 µl              | serum         | TMB 450 nm |
| ELISA                                 | IgM            | DE3504      | 96    | 1 h 45 min      | Cut-off        | 0.63 DU/ml     | 100 µl              | serum, plasma | TMB 450 nm |
| <b>Respiratory Syncytial Virus</b>    |                |             |       |                 |                |                |                     |               |            |
| ELISA                                 | IgG            | DERSVG0380  | 96    | 1 h 45 min      | Cut-off        | diagn. 100 %   | 100 µl              | serum, plasma | TMB 450 nm |
| <b>Rubella Virus</b>                  |                |             |       |                 |                |                |                     |               |            |
| ELISA                                 | IgG            | RUBG0400    | 96    | 1 h 45 min      | 10 – 100 IU/ml | 0.45 IU/ml     | 100 µl              | serum, plasma | TMB 450 nm |
| ELISA                                 | IgM            | RUBM0400    | 96    | 1 h 45 min      | Cut-off        | diagn. 100 %   | 100 µl              | serum, plasma | TMB 450 nm |
| <b>Schistosoma mansoni</b>            |                |             |       |                 |                |                |                     |               |            |
| ELISA                                 | IgG            | DESCHG0410  | 96    | 1 h 45 min      | Cut-off        | diagn. 93.75 % | 100 µl              | serum, plasma | TMB 450 nm |
| <b>Strongyloides</b>                  |                |             |       |                 |                |                |                     |               |            |
| ELISA                                 | IgG/IgM        | DESTRO0690  | 96    | 1 h 45 min      | Cut-off        | diagn. 89.47 % | 100 µl              | serum, plasma | TMB 450 nm |
| <b>Taenia solium</b>                  |                |             |       |                 |                |                |                     |               |            |
| ELISA                                 | IgG            | DETAEG0420  | 96    | 1 h 45 min      | Cut-off        | diagn. 100 %   | 100 µl              | serum, plasma | TMB 450 nm |
| <b>TBE/FSME</b>                       |                |             |       |                 |                |                |                     |               |            |
| ELISA                                 | IgG            | DETICG0440  | 96    | 1 h 45 min      | 50 – 300 U/ml  | 1.78 U/ml      | 100 µl              | serum, plasma | TMB 450 nm |
| ELISA                                 | IgM            | DETICM0440  | 96    | 1 h 45 min      | Cut-off        | diagn. 98.29 % | 100 µl              | serum, plasma | TMB 450 nm |
| <b>Toxocara canis</b>                 |                |             |       |                 |                |                |                     |               |            |
| ELISA                                 | IgG            | DE0450      | 96    | 1 h 45 min      | Cut-off        | diagn. 96.92 % | 100 µl              | serum, plasma | TMB 450 nm |
| <b>Toxoplasma gondii</b>              |                |             |       |                 |                |                |                     |               |            |
| ELISA                                 | IgA            | TOXA0460    | 96    | 1 h 45 min      | Cut-off        | diagn. 91.7 %  | 100 µl              | serum, plasma | TMB 450 nm |
| ELISA                                 | IgG            | TOXG0460    | 96    | 1 h 45 min      | Cut-off        | diagn. 100 %   | 100 µl              | serum, plasma | TMB 450 nm |
| ELISA                                 | IgM            | TOXM0460    | 96    | 1 h 45 min      | Cut-off        | diagn. 98.21 % | 100 µl              | serum, plasma | TMB 450 nm |
| <b>Treponema pallidum (Syphilis)</b>  |                |             |       |                 |                |                |                     |               |            |
| ELISA                                 | IgG            | DE3517      | 96    | 1 h 45 min      | Cut-off        | 0.69 U/ml      | 100 µl              | serum, plasma | TMB 450 nm |
| ELISA                                 | IgM            | DE4267      | 96    | 1 h 45 min      | Cut-off        | 0.491 DU       | 100 µl              | serum, plasma | TMB 450 nm |
| <b>Trichinella spiralis</b>           |                |             |       |                 |                |                |                     |               |            |
| ELISA                                 | IgG            | DETRIG0480  | 96    | 1 h 45 min      | Cut-off        | diagn. 100 %   | 100 µl              | serum, plasma | TMB 450 nm |
| <b>Varicella-Zoster Virus (VZV)</b>   |                |             |       |                 |                |                |                     |               |            |
| ELISA                                 | IgG            | DEVZVG0490  | 96    | 1 h 45 min      | Cut-off        | diagn. 100 %   | 100 µl              | serum, plasma | TMB 450 nm |
| ELISA                                 | IgM            | DEVZVM0490  | 96    | 1 h 45 min      | Cut-off        | diagn. 94.12 % | 100 µl              | serum, plasma | TMB 450 nm |
| <b>Yersinia enterocolitica</b>        |                |             |       |                 |                |                |                     |               |            |
| ELISA                                 | IgA            | DEYERA0990  | 96    | 1 h 45 min      | Cut-off        | diagn. 93.94 % | 100 µl              | serum, plasma | TMB 450 nm |
| ELISA                                 | IgG            | DEYERG0990  | 96    | 1 h 45 min      | Cut-off        | diagn. 95.65 % | 100 µl              | serum, plasma | TMB 450 nm |



## Food Analytics

Our Food Analytics test kits allow a high-sensitive detection of residues, constituents and microbiological contaminants in

food and feed. They enable a reliable and economical detection of numerous analytes like: Mycotoxins, Allergens, Antibiotics, Vitamins and Histamine. So they are part of regular and routine food controls.

For more details please ask for our special brochure "Food Analytics".

| Method                           | Cat.-No. | Tests | Incubation time | Standard range   | Sensitivity                    | Final sample volume | Sample type                                     | Substrate  |
|----------------------------------|----------|-------|-----------------|------------------|--------------------------------|---------------------|---|------------|
| <b>Aflatoxin B1</b>              |          |       |                 |                  |                                |                     |   |            |
| ELISA                            | DEAB1E03 | 96    | 20 min          | 1.5 – 24 ppb     | 0.5 ppb                        | 100 µl              | cereals, beer/gyle                              | TMB 450 nm |
| <b>Aflatoxin M1</b>              |          |       |                 |                  |                                |                     |   |            |
| ELISA                            | DEAM1E01 | 96    | 2 h 20 min      | 10 – 1,000 pg/ml | < 10 pg/ml                     | 100 µl              | milk, milk products                             | TMB 450 nm |
| <b>Aflatoxin total</b>           |          |       |                 |                  |                                |                     |   |            |
| ELISA                            | DEAFTE01 | 96    | 45 min          | 0.05 – 1.5 ng/ml | 0.015 ng/ml                    | 100 µl              | food  | TMB 450 nm |
| <b>Almond</b>                    |          |       |                 |                  |                                |                     |   |            |
| ELISA                            | DEALME01 | 96    | 1 h             | 0.4 – 10 ppm     | 0 – 0.09 ppm                   | 100 µl              | food  | TMB 450 nm |
| <b>beta-Lactoglobulin</b>        |          |       |                 |                  |                                |                     |   |            |
| ELISA                            | DEBLGE01 | 96    | 1 h             | 10 – 400 ppb     | 1.5 ppb                        | 100 µl              | food  | TMB 450 nm |
| <b>Brazil nut</b>                |          |       |                 |                  |                                |                     |   |            |
| ELISA                            | DEPARE01 | 96    | 1 h             | 1 – 40 ppm       | 0.2 ppm                        | 100 µl              | food  | TMB 450 nm |
| <b>Casein</b>                    |          |       |                 |                  |                                |                     |   |            |
| ELISA                            | DECASE01 | 96    | 1 h             | 0.2 – 6 ppm      | 0 – 0.03 ppm                   | 100 µl              | food  | TMB 450 nm |
| <b>Cashew</b>                    |          |       |                 |                  |                                |                     |   |            |
| ELISA                            | DECAWE01 | 96    | 1 h             | 2 – 60 ppm       | 0.2 ppm                        | 100 µl              | food  | TMB 450 nm |
| <b>Chloramphenicol</b>           |          |       |                 |                  |                                |                     |   |            |
| ELISA                            | DECAPE02 | 96    | 1 h             | 0.05 – 5 ng/ml   | 0.03 ng/ml                     | 100 µl              | food, human urine                               | TMB 450 nm |
| <b>Coconut</b>                   |          |       |                 |                  |                                |                     |   |            |
| ELISA                            | DECONE01 | 96    | 1 h             | 2 – 30 ppm       | 0.4 ppm                        | 100 µl              | food  | TMB 450 nm |
| <b>Crustaceans (Tropomyosin)</b> |          |       |                 |                  |                                |                     |   |            |
| ELISA                            | DECRUE01 | 96    | 1 h             | 20 – 400 ppb     | 0.09 ppb                       | 100 µl              | food  | TMB 450 nm |
| <b>Deoxynivalenol</b>            |          |       |                 |                  |                                |                     |   |            |
| ELISA                            | DEDONE03 | 96    | 20 min          | 0.2 – 5 ppm      | 0.08 ppm                       | 100 µl              | cereals, beer/gyle                              | TMB 450 nm |
| <b>Egg White</b>                 |          |       |                 |                  |                                |                     |   |            |
| ELISA                            | DEEGGE01 | 96    | 1 h             | 0.4 – 10 ppm     | 0.05 ppm                       | 100 µl              | food  | TMB 450 nm |
| <b>Fish (Parvalbumin)</b>        |          |       |                 |                  |                                |                     |   |            |
| ELISA                            | DEFISE01 | 96    | 1 h             | 4 – 100 ppm      | 1.4 ppm                        | 100 µl              | food  | TMB 450 nm |
| <b>Folic Acid</b>                |          |       |                 |                  |                                |                     |   |            |
| ELISA                            | DEFOLE01 | 96    | 2 h 20 min      | 4 – 400 ng/ml    | 2 ng/ml                        | 100 µl              | food  | TMB 450 nm |
| <b>Fumonisin</b>                 |          |       |                 |                  |                                |                     |   |            |
| ELISA                            | DEFUME03 | 96    | 20 min          | 0.05 – 5 ppm     | 0.015 ppm                      | 100 µl              | cereals, beer/gyle                              | TMB 450 nm |
| <b>Gladin/Gluten</b>             |          |       |                 |                  |                                |                     |   |            |
| ELISA                            | DEGLUE02 | 96    | 1 h             | 2 – 60 ppm       | 0.3 ppm                        | 100 µl              | food  | TMB 450 nm |
| <b>Hazelnut</b>                  |          |       |                 |                  |                                |                     |   |            |
| ELISA                            | DEHAZE01 | 96    | 1 h             | 1 – 40 ppm       | 0.7 ppm                        | 100 µl              | food  | TMB 450 nm |
| <b>Histamine Food</b>            |          |       |                 |                  |                                |                     |   |            |
| ELISA                            | DEE3100  | 96    | 55 min          | 0.5 – 50 ng/ml   | 0.15 mg/l                      | 25 µl               | fish, sausage, milk, wine, fish meal, champagne | TMB 450 nm |
| <b>Lupine</b>                    |          |       |                 |                  |                                |                     |   |            |
| ELISA                            | DELUPE01 | 96    | 1 h             | 2 – 30 ppm       | 0.2 ppm                        | 100 µl              | food  | TMB 450 nm |
| <b>Lysozyme</b>                  |          |       |                 |                  |                                |                     |   |            |
| ELISA                            | DELYSE01 | 96    | 1 h             | 25 – 250 ppb     | wine: 2 ppb;<br>others: 10 ppb | 100 µl              | food  | TMB 450 nm |
| <b>Macadamia nut</b>             |          |       |                 |                  |                                |                     |   |            |
| ELISA                            | DEMACE01 | 96    | 1 h             | 1 – 40 ppm       | 0.1 ppm                        | 100 µl              | food  | TMB 450 nm |
| <b>Milk</b>                      |          |       |                 |                  |                                |                     |   |            |
| ELISA                            | DEMILE01 | 96    | 1 h             | 0.4 – 10 ppm     | 0.05 ppm                       | 100 µl              | food  | TMB 450 nm |
| <b>Molluscs (Tropomyosin)</b>    |          |       |                 |                  |                                |                     |   |            |
| ELISA                            | DEMOLE01 | 96    | 1 h             | 10 – 400 ppb     | 1.7 ppb                        | 100 µl              | food  | TMB 450 nm |
| <b>Mustard</b>                   |          |       |                 |                  |                                |                     |   |            |
| ELISA                            | DEMUSE01 | 96    | 1 h             | 2 – 60 ppm       | 1 ppm                          | 100 µl              | food  | TMB 450 nm |
| <b>Ochratoxin A</b>              |          |       |                 |                  |                                |                     |   |            |
| ELISA                            | DEOTAE03 | 96    | 15 min          | 2 – 50 ppb       | 0.8 ppb                        | 50 µl               | cereals, beer/gyle, wine                        | TMB 450 nm |
| <b>Ovalbumin</b>                 |          |       |                 |                  |                                |                     |   |            |
| ELISA                            | DEOVAE01 | 96    | 1 h             | 25 – 500 ppb     | 4 ppb                          | 100 µl              | food  | TMB 450 nm |
| <b>Peanut</b>                    |          |       |                 |                  |                                |                     |   |            |
| ELISA                            | DEPEAE01 | 96    | 1 h             | 1 – 40 ppm       | 0.1 ppm                        | 100 µl              | food  | TMB 450 nm |
| <b>Pecan nut</b>                 |          |       |                 |                  |                                |                     |   |            |
| ELISA                            | DEPECE01 | 96    | 1 h             | 2 – 60 ppm       | 0.2 ppm                        | 100 µl              | food  | TMB 450 nm |
| <b>Penicillin</b>                |          |       |                 |                  |                                |                     |   |            |
| ELISA                            | DEPENE01 | 96    | 2 h 20 min      | 4 – 400 ng/ml    | 3 ng/ml                        | 100 µl              | shrimps, milk                                   | TMB 450 nm |
| <b>Pistachio</b>                 |          |       |                 |                  |                                |                     |   |            |
| ELISA                            | DEPISE01 | 96    | 1 h             | 1 – 40 ppm       | 0.13 ppm                       | 100 µl              | food  | TMB 450 nm |
| <b>Quinolones</b>                |          |       |                 |                  |                                |                     |   |            |
| ELISA                            | DEQUIE01 | 96    | 45 min          | 0.4 – 40 ng/ml   | 0.13 ng/ml                     | 50 µl               | food  | TMB 450 nm |
| <b>Sesame</b>                    |          |       |                 |                  |                                |                     |   |            |
| ELISA                            | DESESE01 | 96    | 1 h             | 2 – 30 ppm       | 0.2 ppm                        | 100 µl              | food  | TMB 450 nm |
| <b>Soy</b>                       |          |       |                 |                  |                                |                     |   |            |
| ELISA                            | DESOJE01 | 96    | 1 h             | 40 – 1,000 ppb   | 16 ppb                         | 100 µl              | food  | TMB 450 nm |



| Method                    | Cat.-No. | Tests | Incubation time | Standard range   | Sensitivity | Final sample volume | Sample type        | Substrate   |
|---------------------------|----------|-------|-----------------|------------------|-------------|---------------------|--------------------|-------------|
| <b>Streptomycin</b>       |          |       |                 |                  |             |                     |                    |             |
| ELISA                     | DESTRE02 | 96    | 1 h             | 2 – 200 ng/ml    | 1 ng/ml     | 100 µl              | food               | TMB 450 nm  |
| <b>T2 Toxin</b>           |          |       |                 |                  |             |                     |                    |             |
| ELISA                     | DET2TE03 | 96    | 20 min          | 17.5 – 1,750 ppb | 13 ppb      | 100 µl              | food               | TMB 450 nm  |
| <b>Tetracycline</b>       |          |       |                 |                  |             |                     |                    |             |
| ELISA                     | DETCYE01 | 96    | 1 h 20 min      | 0.04 – 4 ng/ml   | 0.024 ng/ml | 100 µl              | food               | TMB 450 nm  |
| <b>Total Soy Protein</b>  |          |       |                 |                  |             |                     |                    |             |
| ELISA                     | DETSPE01 | 96    | 1 h             | 0 – 36 ppm       | 0.2 ppm     | 100 µl              | food               | TMB 450 nm  |
| <b>Vitamin B12</b>        |          |       |                 |                  |             |                     |                    |             |
| ELISA                     | DEB12E01 | 96    | 1 h 20 min      | 0.4 – 40 ng/ml   | 0.3 ng/ml   | 50 µl               | food               | TMB 450 nm  |
| <b>Vitamin H (Biotin)</b> |          |       |                 |                  |             |                     |                    |             |
| ELISA                     | DEBIOE01 | 96    | 1 h 20 min      | 1 – 25 ng/ml     | 0.5 ng/ml   | 50 µl               | food               | pNpp 405 nm |
| <b>Walnut</b>             |          |       |                 |                  |             |                     |                    |             |
| ELISA                     | DEWALE01 | 96    | 1 h             | 2 – 60 ppm       | 0.35 ppm    | 100 µl              | food               | TMB 450 nm  |
| <b>Zearalenone</b>        |          |       |                 |                  |             |                     |                    |             |
| ELISA                     | DEZEAE03 | 96    | 20 min          | 10 – 500 ppb     | 5 ppb       | 100 µl              | cereals, beer/gyle | TMB 450 nm  |

## Allergy & Food Intolerance

The Demeditec Food Intolerance Screening Tests offer a fast, sensitive and reliable detection of IgG4 antibodies to numerous food antigens in order to identify potential food intolerances. Each kit includes all reagents required for the performance of the tests. In addition to our standard formats we offer a unique

concept. It allows the user to define an individual test profile by selecting food antigen layout, types and number from more than 400 available food antigens.



| Method                            | Cat.-No. | Tests | Incubation time | Standard range   | Sensitivity           | Internal controls | Final sample volume | Sample type   | Substrate   |
|-----------------------------------|----------|-------|-----------------|------------------|-----------------------|-------------------|---------------------|---------------|-------------|
| <b>Total IgE</b>                  |          |       |                 |                  |                       |                   |                     |               |             |
| ELISA                             | DEIGE02  | 96    | 45 min          | 5 – 1,000 IU/ml  | 0.8 IU/ml             | -                 | 10 µl               | serum, plasma | TMB 450 nm  |
| <b>IgG4 Screen Nutritional 20</b> |          |       |                 |                  |                       |                   |                     |               |             |
| ELISA                             | DE40496  | 96    | 2 h 30 min      | 0.35 – 17.5 U/ml | depending on allergen | -                 | 100 µl              | serum, plasma | pNpp 405 nm |
| <b>IgG4 Screen Nutritional 88</b> |          |       |                 |                  |                       |                   |                     |               |             |
| ELISA                             | DE40188  | 96    | 2 h 30 min      | 0.35 – 100 U/ml  | depending on allergen | 2                 | 100 µl              | serum, plasma | pNpp 405 nm |

Fotos: S. Behringer, G. Häusler

## Diabetes

**New**

**Intact Proinsulin ELISA (TE1012)**

| Method                    | Cat.-No. | Tests | Incubation time | Standard range      | Sensitivity  | Internal controls | Final sample volume | Sample type                    | Isotope / Substrate |
|---------------------------|----------|-------|-----------------|---------------------|--------------|-------------------|---------------------|--------------------------------|---------------------|
| <b>C-Peptide</b>          |          |       |                 |                     |              |                   |                     |                                |                     |
| ELISA                     | DE1293   | 96    | 1 h 50 min      | 0.2 – 16 ng/ml      | 0.064 ng/ml  | -                 | 100 µl              | serum, plasma, urine           | TMB 450 nm          |
| IRMA                      | IT3639   | 100   | 2 h             | 30.5 – 6,000 pmol/l | 0.011 ng/ml  | 2                 | 50 µl               | serum, plasma, urine           | I-125               |
| <b>DPP4/CD26</b>          |          |       |                 |                     |              |                   |                     |                                |                     |
| ELISA                     | JP27789  | 96    | 2 h             | 125 – 8,000 pg/ml   | 8.58 pg/ml   | -                 | 100 µl              | serum, plasma, urine, CSF, ccs | TMB 450 nm          |
| <b>GADAb</b>              |          |       |                 |                     |              |                   |                     |                                |                     |
| ELISA                     | GDE96    | 96    | 2 h 40 min      | 5 – 2,000 U/ml      | 0.57 U/ml    | 2                 | 25 µl               | serum                          | TMB 450 nm          |
| <b>GLP-1, active form</b> |          |       |                 |                     |              |                   |                     |                                |                     |
| ELISA                     | JP27784  | 96    | 2 h 30 min      | 1.25 – 80 pmol/l    | 0.1 pmol/l   | -                 | 100 µl              | plasma                         | TMB 450 nm          |
| <b>IA-2 Ab</b>            |          |       |                 |                     |              |                   |                     |                                |                     |
| ELISA                     | IAE/96/2 | 96    | 17 h 40 min     | 7.5 – 4,000 U/ml    | 1.25 U/ml    | 2                 | 50 µl               | serum                          | TMB 450 nm          |
| <b>Insulin</b>            |          |       |                 |                     |              |                   |                     |                                |                     |
| ELISA                     | DE2935   | 96    | 1 h 15 min      | 6.25 – 100 µIU/ml   | 1.76 µIU/ml  | -                 | 25 µl               | serum, plasma                  | TMB 450 nm          |
| IRMA                      | DE39100  | 100   | 2 h             | 5.6 – 530 µIU/ml    | 0.6 µIU/ml   | 1                 | 100 µl              | serum                          | I-125               |
| IRMA                      | IT3210   | 100   | 2 h             | 3.15 – 315 µIU/ml   | 0.5 µIU/ml   | 2                 | 50 µl               | serum, plasma                  | I-125               |
| <b>Intact Proinsulin</b>  |          |       |                 |                     |              |                   |                     |                                |                     |
| ELISA                     | TE1012   | 96    | 2 h 15 min      | 0 – 60 pmol/l       | 0.15 pmol/l  | 2                 | 50 µl               | serum, plasma                  | TMB 450 nm          |
| <b>Leptin</b>             |          |       |                 |                     |              |                   |                     |                                |                     |
| ELISA                     | DDE007   | 96    | 1 h 45 min      | 1 – 100 ng/ml       | < 0.25 ng/ml | 2                 | 20 µl               | serum, plasma                  | TMB 450 nm          |
| ELISA                     | JP27775  | 96    | 2 h             | 15.6 – 1,000 pg/ml  | 2 pg/ml      | -                 | 100 µl              | serum, plasma, ccs             | TMB 450 nm          |
| <b>ZnT8 Ab</b>            |          |       |                 |                     |              |                   |                     |                                |                     |
| ELISA                     | ZNT8/96  | 96    | 17 h 40 min     | 10 – 2,000 U/ml     | 1.2 U/ml     | 3                 | 25 µl               | serum                          | TMB 450 nm          |

## Reproduction / Down-Syndrome

You can find a wide range of immunoassays for the determination of androgenic and gynaecological hormone levels in serum, plasma or in urine samples in the following table. Hormones are substances produ-

ced in particular organs (glands) and transported to their site of action by the blood stream. In combination with the nervous system, hormones control metabolic processes in the entire body.

The steroid hormones are a special group of hormones that play an important role in many essential physiological processes, such as sex differentiation, fertility, pregnancy, mineral metabolism, energy metabolism and others.

As many disorders and diseases are caused or accompanied by too high or too low hormone levels, their determination is an important tool in the clinical laboratories.



| Method                                   | Cat.-No. | Tests | Incubation time | Standard range      | Sensitivity  | Internal controls | Final sample volume | Sample type           | Isotope / Substrate |
|--|----------|-------|-----------------|---------------------|--------------|-------------------|---------------------|-----------------------|---------------------|
| <b>17-OH-Progesterone</b>                |          |       |                 |                     |              |                   |                     |                       |                     |
| ELISA                                    | DEH3322  | 96    | 1 h 30 min      | 0.1 – 25 ng/ml      | 0.022 ng/ml  | 2                 | 25 µl               | serum, plasma         | TMB 450 nm          |
| RIA                                      | IT1452   | 100   | 2 h             | 0.12 – 47 ng/ml     | 0.04 ng/ml   | 2                 | 25 µl               | serum, plasma         | I-125               |
| <b>Active Androstenediol Glucuronide</b> |          |       |                 |                     |              |                   |                     |                       |                     |
| RIA                                      | DSL9200  | 100   | 3 h             | 0 – 100 ng/ml       | 0.07 ng/ml   | 2                 | 100 µl              | serum                 | I-125               |
| <b>Active Androstenedione</b>            |          |       |                 |                     |              |                   |                     |                       |                     |
| RIA                                      | DSL3800  | 100   | 1 h             | 0 – 10 ng/ml        | 0.05 ng/ml   | 2                 | 50 µl               | serum, plasma         | I-125               |
| <b>Active Dihydrotestosterone</b>        |          |       |                 |                     |              |                   |                     |                       |                     |
| RIA                                      | DSL9600i | 100   | 2 h             | 0 – 2,500 pg/ml     | 9.14 pg/ml   | 2                 | 100 µl              | serum, plasma         | I-125               |
| <b>Active Free Testosterone</b>          |          |       |                 |                     |              |                   |                     |                       |                     |
| RIA                                      | DSL4900  | 100   | 1 h             | 0 – 100 pg/ml       | 0.13 pg/ml   | 2                 | 50 µl               | serum                 | I-125               |
| <b>AFP</b>                               |          |       |                 |                     |              |                   |                     |                       |                     |
| IRMA                                     | IM1441   | 100   | 45 min          | 3 – 400 IU/ml       | 0.11 IU/ml   | 2                 | 50 µl               | serum, amniotic fluid | I-125               |
| <b>AMH</b>                               |          |       |                 |                     |              |                   |                     |                       |                     |
| ELISA                                    | DE6141   | 96    | 1 h 15 min      | 0.4 – 20 ng/ml      | 0.044 ng/ml  | 2                 | 25 µl               | serum, plasma         | TMB 450 nm          |
| ELISA                                    | A79765   | 96    | 2 h 30 min      | 0.14 – 22 ng/ml     | 0.08 ng/ml   | 2                 | 60 µl               | serum, plasma         | TMB 450 nm          |
| <b>Androstenedione</b>                   |          |       |                 |                     |              |                   |                     |                       |                     |
| ELISA                                    | DE3265   | 96    | 1 h 30 min      | 0.1 – 10 ng/ml      | 0.021 ng/ml  | 2                 | 20 µl               | serum, plasma         | TMB 450 nm          |
| <b>beta-hCG free</b>                     |          |       |                 |                     |              |                   |                     |                       |                     |
| IRMA                                     | IT2459   | 100   | 1 h 30 min      | 0.32 – 200 ng/ml    | 0.05 ng/ml   | 2                 | 100 µl              | serum, plasma         | I-125               |
| <b>DHEA</b>                              |          |       |                 |                     |              |                   |                     |                       |                     |
| ELISA                                    | DEH3344  | 96    | 1 h 30 min      | 0.3 – 30 ng/ml      | 0.082 ng/ml  | 2                 | 25 µl               | serum, plasma         | TMB 450 nm          |
| RIA                                      | DE8900   | 100   | 1 h             | 0.34 – 45 ng/ml     | 0.25 ng/ml   | 2                 | 25 µl               | serum, plasma         | I-125               |
| <b>DHEA-S</b>                            |          |       |                 |                     |              |                   |                     |                       |                     |
| ELISA                                    | DE1562   | 96    | 1 h 15 min      | 0.1 – 10 µg/ml      | 0.044 µg/ml  | -                 | 25 µl               | serum, plasma         | TMB 450 nm          |
| RIA                                      | IT0729   | 100   | 30 min          | 6 – 1,000 µg/100 ml | 6 µg/100ml   | 1                 | 25 µl               | serum, plasma         | I-125               |
| <b>Dihydrotestosterone (DHT)</b>         |          |       |                 |                     |              |                   |                     |                       |                     |
| ELISA                                    | DE5761   | 96    | 1 h 15 min      | 25 – 1,500 pg/ml    | 6.82 pg/ml   | 2                 | 75 µl               | serum, plasma         | TMB 450 nm          |
| <b>Estradiol</b>                         |          |       |                 |                     |              |                   |                     |                       |                     |
| ELISA                                    | DE2693   | 96    | 2 h             | 25 – 2,000 pg/ml    | 10.6 pg/ml   | 2                 | 25 µl               | serum, plasma         | TMB 450 nm          |
| ELISA                                    | DE4399   | 96    | 2 h 30 min      | 10 – 400 pg/ml      | 5.583 pg/ml  | 2                 | 50 µl               | serum, plasma         | TMB 450 nm          |
| RIA                                      | A21854   | 100   | 3 h             | 9.5 – 4,104 pg/ml   | 10.41 pg/ml  | 1                 | 100 µl              | serum, plasma         | I-125               |
| <b>Estriol unconjugated</b>              |          |       |                 |                     |              |                   |                     |                       |                     |
| ELISA                                    | DE1612   | 96    | 1 h 30 min      | 0.3 – 40 ng/ml      | 0.021 ng/ml  | -                 | 10 µl               | serum                 | TMB 450 nm          |
| <b>Estrone</b>                           |          |       |                 |                     |              |                   |                     |                       |                     |
| ELISA                                    | DE4174   | 96    | 1 h 15 min      | 15 – 2,400 pg/ml    | 8.1 pg/ml    | 2                 | 25 µl               | serum, plasma         | TMB 450 nm          |
| RIA                                      | DSL8700  | 100   | 1 h             | 0 – 2,000 pg/ml     | 10 pg/ml     | 2                 | 50 µl               | serum, plasma         | I-125               |
| <b>Estrone Sulfate</b>                   |          |       |                 |                     |              |                   |                     |                       |                     |
| RIA                                      | DSL5400  | 100   | 3 h 10 min      | 0 – 80 ng/ml        | 0.01 ng/ml   | 2                 | 100 µl              | serum, plasma         | I-125               |
| <b>FSH</b>                               |          |       |                 |                     |              |                   |                     |                       |                     |
| ELISA                                    | DE1288   | 96    | 40 min          | 5 – 100 mIU/ml      | 0.856 mIU/ml | -                 | 25 µl               | serum                 | TMB 450 nm          |
| IRMA                                     | IT2125   | 100   | 1 h 30 min      | 0.55 – 180 IU/l     | 0.17 IU/l    | 2                 | 100 µl              | serum, plasma         | I-125               |
| <b>hCG</b>                               |          |       |                 |                     |              |                   |                     |                       |                     |
| ELISA2                                   | DE1469   | 96    | 40 min          | 5 – 1,000 mIU/ml    | < 5 mIU/ml   | -                 | 25 µl               | serum, plasma         | TMB 450 nm          |
| <b>hPL</b>                               |          |       |                 |                     |              |                   |                     |                       |                     |
| ELISA                                    | DE1283   | 96    | 40 min          | 1.25 – 20 mg/l      | 0.043 mg/l   | 2                 | 10 µl               | serum                 | TMB 450 nm          |

## Reproduction / Down-Syndrome

| Method                           | Cat.-No.     | Tests  | Incubation time | Standard range    | Sensitivity | Internal controls | Final sample volume | Sample type   | Isotope / Substrate |
|----------------------------------|--------------|--------|-----------------|-------------------|-------------|-------------------|---------------------|---------------|---------------------|
| <b>Inhibin A</b>                 |              |        |                 |                   |             |                   |                     |               |                     |
| ELISA                            | DE10-28100   | 96     | 4 h 15 min      | 9.5 – 1,001 pg/ml | 1 pg/ml     | 2                 | 50 µl               | serum, plasma | TMB 450 nm          |
| ELISA                            | DE10-28100-4 | 4 x 96 | 4 h 15 min      | 9.5 – 1,001 pg/ml | 1 pg/ml     | 2                 | 50 µl               | serum, plasma | TMB 450 nm          |
| <b>Inhibin B Gen II</b>          |              |        |                 |                   |             |                   |                     |               |                     |
| ELISA                            | A81303       | 96     | 3 h 30 min      | 10 – 966 pg/ml    | 2.6 pg/ml   | 2                 | 50 µl               | serum, plasma | TMB 450 nm          |
| <b>LH</b>                        |              |        |                 |                   |             |                   |                     |               |                     |
| ELISA                            | DE1289       | 96     | 40 min          | 10 – 200 mIU/ml   | 1.27 mIU/ml | –                 | 25 µl               | serum         | TMB 450 nm          |
| IRMA                             | IT1381       | 100    | 1 h 30 min      | 0.5 – 180 IU/l    | 0.16 IU/l   | 1                 | 100 µl              | serum, plasma | I-125               |
| <b>Progesterone</b>              |              |        |                 |                   |             |                   |                     |               |                     |
| ELISA                            | DE1561       | 96     | 1 h 20 min      | 0.3 – 40 ng/ml    | 0.045 ng/ml | –                 | 25 µl               | serum, plasma | TMB 450 nm          |
| RIA                              | IT1188       | 100    | 1 h             | 0.09 – 65 ng/ml   | 0.03 ng/ml  | 1                 | 50 µl               | serum, plasma | I-125               |
| <b>Prolactin</b>                 |              |        |                 |                   |             |                   |                     |               |                     |
| ELISA                            | DE1291       | 96     | 40 min          | 5 – 200 ng/ml     | 0.35 ng/ml  | –                 | 25 µl               | serum         | TMB 450 nm          |
| IRMA                             | IT2121       | 100    | 1 h             | 1.8 – 168 ng/ml   | 0.5 ng/ml   | 2                 | 50 µl               | serum, plasma | I-125               |
| <b>SHBG</b>                      |              |        |                 |                   |             |                   |                     |               |                     |
| ELISA                            | DE2996       | 96     | 2 h 45 min      | 4 – 260 nmol/l    | 0.23 nmol/l | 2                 | 50 µl               | serum, plasma | TMB 450 nm          |
| IRMA                             | IT3532       | 100    | 2 h             | 3 – 300 nmol/l    | 0.2 nmol/l  | 2                 | 20 µl               | serum         | I-125               |
| <b>Testosterone</b>              |              |        |                 |                   |             |                   |                     |               |                     |
| ELISA                            | DE1559       | 96     | 1 h 15 min      | 0.2 – 16 ng/ml    | 0.08 ng/ml  | –                 | 25 µl               | serum, plasma | TMB 450 nm          |
| <b>Testosterone direct</b>       |              |        |                 |                   |             |                   |                     |               |                     |
| RIA                              | IT1119       | 100    | 3 h             | 0.12 – 21 ng/ml   | 0.025 ng/ml | 1                 | 50 µl               | serum, plasma | I-125               |
| <b>Testosterone free</b>         |              |        |                 |                   |             |                   |                     |               |                     |
| ELISA                            | DE2924       | 96     | 1 h 15 min      | 0.2 – 100 pg/ml   | 0.04 pg/ml  | 2                 | 20 µl               | serum, plasma | TMB 450 nm          |
| RIA                              | DE4369       | 96     | 2 h             | 0.53 – 95.4 pg/ml | 0.13 pg/ml  | 2                 | 50 µl               | serum         | I-125               |
| <b>Ultra-Sensitive Estradiol</b> |              |        |                 |                   |             |                   |                     |               |                     |
| RIA                              | DSL4800      | 100    | 3 h 15 min      | 0 – 750 pg/ml     | 2.2 pg/ml   | 2                 | 200 µl              | serum, plasma | I-125               |



## Thyroid

This chapter contains various products for the laboratory investigation of thyroid diseases. These products are available in ELISA and RIA technology and include products for the quantitative measurement of free and total thyroid hormones and high sensitive TSH assays. Also we are offering test kits for the measurement of antibodies directed against TSH receptors of the thyroid gland.

| Method                                  | Cat.-No.  | Tests | Incubation time | Standard range     | Sensitivity  | Internal controls | Final sample volume | Sample type   | Isotope / Substrate |
|---|-----------|-------|-----------------|--------------------|--------------|-------------------|---------------------|---------------|---------------------|
| <b>FT3</b>                              |           |       |                 |                    |              |                   |                     |               |                     |
| ELISA                                   | DE3801    | 96    | 1 h 30 min      | 1 – 20 pg/ml       | 0.536 pg/ml  | 2                 | 50 µl               | serum         | TMB 450 nm          |
| RIA                                     | IM1579    | 100   | 2 h             | 2.1 – 44 pM        | 0.5 pM       | 1                 | 100 µl              | serum, plasma | I-125               |
| RIA                                     | IM3320    | 400   | 2 h             | 2.1 – 44 pM        | 0.5 pM       | 1                 | 100 µl              | serum, plasma | I-125               |
| <b>FT4</b>                              |           |       |                 |                    |              |                   |                     |               |                     |
| ELISA                                   | DE3775    | 96    | 1 h 30 min      | 0.5 – 8 ng/dl      | 0.22 ng/dl   | 2                 | 50 µl               | serum, plasma | TMB 450 nm          |
| RIA                                     | IM1363    | 100   | 1 h             | 2.6 – 83 pM        | 0.4 pM       | 1                 | 25 µl               | serum, plasma | I-125               |
| RIA                                     | IM3321    | 400   | 1 h             | 2.6 – 83 pM        | 0.4 pM       | 1                 | 25 µl               | serum, plasma | I-125               |
| <b>FT4 Plus</b>                         |           |       |                 |                    |              |                   |                     |               |                     |
| RIA                                     | C55856    | 100   | 1 h             | 0.94 – 75 pM       | 0.94 pM      | 2                 | 25 µl               | serum, plasma | I-125               |
| RIA                                     | C55857    | 400   | 1 h             | 0.94 – 75 pM       | 0.94 pM      | 2                 | 25 µl               | serum, plasma | I-125               |
| <b>T3 total</b>                         |           |       |                 |                    |              |                   |                     |               |                     |
| RIA                                     | IT1699    | 100   | 1 h             | 0.83 – 13.2 nmol/l | 0.26 nmol/l  | 2                 | 25 µl               | serum, plasma | I-125               |
| <b>T4 total</b>                         |           |       |                 |                    |              |                   |                     |               |                     |
| RIA                                     | IT1447    | 100   | 1 h             | 25 – 400 nmol/l    | 10.63 nmol/l | 2                 | 20 µl               | serum, plasma | I-125               |
| <b>Thyroidal Peroxidase-Ab (TPO-Ab)</b> |           |       |                 |                    |              |                   |                     |               |                     |
| ELISA                                   | DE7580    | 96    | 1 h 5 min       | 33 – 3,000 IU/ml   | 5 IU/ml      | 2                 | 100 µl              | serum, plasma | TMB 450 nm          |
| RIA                                     | RK-36CT   | 100   | 2 h             | 15 – 1,900 IU/ml   | 7.26 IU/ml   | 2                 | 10 µl               | serum         | I-125               |
| <b>Thyroglobulin (hTg)</b>              |           |       |                 |                    |              |                   |                     |               |                     |
| IRMA                                    | DE20100   | 100   | 16 - 24 h       | 0.3 – 250 ng/ml    | 0.022 ng/ml  | 2                 | 100 µl              | serum         | I-125               |
| <b>Thyroglobulin-Ab (Tg-Ab)</b>         |           |       |                 |                    |              |                   |                     |               |                     |
| ELISA                                   | DE7590    | 96    | 1 h 5 min       | 100 – 9,000 IU/ml  | 10 IU/ml     | 2                 | 100 µl              | serum, plasma | TMB 450 nm          |
| RIA                                     | RK-8CT    | 100   | 2 h             | 30 – 3,000 IU/ml   | 8.29 IU/ml   | 2                 | 100 µl              | serum         | I-125               |
| <b>TRAb</b>                             |           |       |                 |                    |              |                   |                     |               |                     |
| ELISA                                   | TRE/96/2A | 96    | 3 h             | 1 – 40 U/l         | 0.55 U/l     | 2                 | 75 µl               | serum         | TMB 450 nm          |
| RRA                                     | A54464    | 100   | 3 h             | 1 – 40 IU/l        | 0.33 IU/l    | 2                 | 100 µl              | serum         | I-125               |
| <b>TSH</b>                              |           |       |                 |                    |              |                   |                     |               |                     |
| ELISA                                   | DE4171    | 96    | 2 h             | 0.25 – 15 mIU/l    | 0.06 mIU/l   | 2                 | 25 µl               | serum, plasma | TMB 450 nm          |
| IRMA                                    | IM3712    | 100   | 1 h             | 0.15 – 50 mIU/l    | 0.04 mIU/l   | 2                 | 100 µl              | serum, plasma | I-125               |
| IRMA                                    | IM3713    | 400   | 1 h             | 0.15 – 50 mIU/l    | 0.04 mIU/l   | 2                 | 100 µl              | serum, plasma | I-125               |

# Nephrology



Nephrology concerns the diagnosis and treatment of kidney diseases, including electrolyte disturbances and hypertension, and the care of those requiring renal replacement therapy, including dialysis and renal transplant patients. Many diseases affecting the kidney are systemic disorders not limited to the organ itself, and may require special treatment.

| Method                                    | Cat.-No. | Tests | Incubation time | Standard range     | Sensitivity                       | Internal controls | Final sample volume | Sample type                  | Isotope / Substrate |
|---|----------|-------|-----------------|--------------------|-----------------------------------|-------------------|---------------------|------------------------------|---------------------|
| <b>ACTH</b>                               |          |       |                 |                    |                                   |                   |                     |                              |                     |
| IRMA                                      | IT2030   | 100   | 2 h             | 9.5 - 1,425 pg/ml  | 1.2 pg/ml                         | 1                 | 300 µl              | plasma                       | I-125               |
| <b>Aldosterone</b>                        |          |       |                 |                    |                                   |                   |                     |                              |                     |
| ELISA                                     | DE5298   | 96    | 2 h             | 20 - 1,000 pg/ml   | s: 7.374 pg/ml;<br>u: 8.902 pg/ml | 2                 | 100 µl              | serum, plasma, urine         | TMB 450 nm          |
| RIA                                       | DE8600   | 100   | 3 h             | 30 - 1,700 pg/ml   | 7.64 pg/ml                        | 2                 | 100 µl              | serum, plasma, urine         | I-125               |
| RIA                                       | DERCW100 | 96    | 18-24 h or 3h   | 23.8 - 1,408 pg/ml | 1.4 pg/ml                         | 1                 | 200 µl              | serum, urine                 | I-125               |
| RIA                                       | IT1664   | 100   | 3 h             | 28.5 - 2,150 pg/ml | 14.8 pg/ml                        | 1                 | 50 µl               | serum, plasma, urine         | I-125               |
| <b>Cortisol</b>                           |          |       |                 |                    |                                   |                   |                     |                              |                     |
| ELISA                                     | DEH3388  | 96    | 1 h 30 min      | 10 - 800 ng/ml     | 0.38 ng/ml                        | 2                 | 10 µl               | serum, plasma                | TMB 450 nm          |
| ELISA                                     | DE2989   | 96    | 1 h 15 min      | 1 - 200 ng/ml      | 0.22 ng/ml                        | 2                 | 10 µl               | urine                        | TMB 450 nm          |
| RIA                                       | DE28100  | 100   | 2 h             | 40 - 1,600 nmol/l  | 2.9 nmol/l                        | 1                 | 10 µl               | serum                        | I-125               |
| RIA                                       | IT1841   | 100   | 1 h             | 21 - 2,360 nmol/l  | 5 nmol/l                          | 1                 | 50 µl               | serum, plasma, urine         | I-125               |
| <b>Cortisol sensitive</b>                 |          |       |                 |                    |                                   |                   |                     |                              |                     |
| RIA                                       | C23117   | 100   | 1 h             | 0 - 2,000 nM       | 4.23 nM                           | 1                 | 50 µl/300 µl        | serum, plasma, urine, saliva | I-125               |
| <b>Gd-IgA1 (Galactose-deficient IgA1)</b> |          |       |                 |                    |                                   |                   |                     |                              |                     |
| ELISA                                     | JP27600  | 96    | 2 h             | 1.56 - 100 ng/ml   | 0.488 ng/ml                       | -                 | 50 µl               | serum, plasma                | TMB 450 nm          |

## Others

### New

**secreted alpha-Klotho human ELISA (JP27901)**  
**Pyruvate Enzymatic Assay (0142 KIT E HLP)**

| Method                       | Cat.-No.       | Tests | Incubation time | Standard range                | Sensitivity   | Internal controls | Final sample volume | Sample type                                | Isotope / Substrate |
|------------------------------|----------------|-------|-----------------|-------------------------------|---------------|-------------------|---------------------|--|---------------------|
| <b>6-Sulfatoxymelatonin</b>  |                |       |                 |                               |               |                   |                     |  |                     |
| ELISA                        | EK-M6S         | 96    | 3 h 46 min      | 0.8 - 40 ng/ml                | 0.14 ng/ml    | 2                 | 50 µl               | urine                                      | TMB 450 nm          |
| <b>ApoB-100 human</b>        |                |       |                 |                               |               |                   |                     |  |                     |
| ELISA                        | JP27181        | 96    | 2 h             | 0.13 - 8.4 µg/ml              | 0.03 µg/ml    | -                 | 100 µl              | serum, plasma, ccs                         | TMB 450 nm          |
| <b>Biotin (Vitamin H)</b>    |                |       |                 |                               |               |                   |                     |  |                     |
| ELISA                        | K8141          | 96    | 1 h 15 min      | 48.1 - 1,100 ng/l             | 32.4 ng/l     | 2                 | 50 µl               | serum, plasma, urine, milk                 | TMB 450 nm          |
| <b>Calprotectin</b>          |                |       |                 |                               |               |                   |                     |  |                     |
| ELISA                        | DE849          | 96    | 2 h             | 46.6 - 1,991 µg/ml            | 2.5 ng/ml     | 3                 | 50 µl               | stool                                      | TMB 450 nm          |
| <b>Corticosterone</b>        |                |       |                 |                               |               |                   |                     |  |                     |
| ELISA                        | DE4164         | 96    | 1 h 15 min      | 5 - 240 nmol/l                | < 1.63 nmol/l | 2                 | 20 µl               | serum, plasma                              | TMB 450 nm          |
| <b>Diamine oxidase (DAO)</b> |                |       |                 |                               |               |                   |                     |  |                     |
| ELISA                        | K8500          | 96    | 4 h 20 min      | 0.37 - 10 U/ml                | 0.130 U/ml    | 2                 | 100 µl              | serum, dried blood spots                   | TMB 450 nm          |
| <b>EPO (Erythropoietin)</b>  |                |       |                 |                               |               |                   |                     |  |                     |
| ELISA                        | DE3646         | 96    | 2 h 30 min      | 10.7 - 469 mIU/ml             | 1.1 mIU/ml    | 2                 | 200 µl              | serum                                      | TMB 450 nm          |
| <b>Ferritin</b>              |                |       |                 |                               |               |                   |                     |  |                     |
| ELISA                        | DE4408         | 96    | 1 h 15 min      | 5 - 800 ng/ml                 | 0.35 ng/ml    | 1                 | 10 µl               | serum, plasma                              | TMB 450 nm          |
| IRMA                         | DE34100        | 100   | 1 h             | 5 - 1,000 ng/ml               | 0.06 ng/ml    | 1                 | 40 µl               | serum                                      | I-125               |
| IRMA                         | IT3492         | 100   | 1 h             | 4.4 - 1,000 ng/ml             | 1 ng/ml       | 2                 | 20 µl               | serum, plasma                              | I-125               |
| <b>Melatonin</b>             |                |       |                 |                               |               |                   |                     |  |                     |
| RIA                          | RK-MEL2        | 200   | 20 h 15 min     | 0.5 - 50 pg/ml                | 0.3 pg/ml     | 2                 | 400 µl              | serum, plasma, urine, other biol. specimen | I-125               |
| <b>Protein C</b>             |                |       |                 |                               |               |                   |                     |  |                     |
| ELISA                        | DE10901        | 96    | 1 h 30 min      | 12.5 - 150 %                  | 6 %           | 2                 | 100 µl              | plasma                                     | TMB 450 nm          |
| <b>Protein S</b>             |                |       |                 |                               |               |                   |                     |  |                     |
| ELISA                        | DE10902        | 96    | 1 h 30 min      | 12.5 - 150 %                  | 1 %           | 2                 | 100 µl              | plasma                                     | TMB 450 nm          |
| <b>Pyruvate</b>              |                |       |                 |                               |               |                   |                     |  |                     |
| Enzymatic Assay              | 0142 KIT E HLP | 150   | 55 min          | refer to the value data sheet | 0.005 mmol/l  | -                 | 30 µl               | wb   | enzymatic 340 nm    |
| <b>secreted alpha-Klotho</b> |                |       |                 |                               |               |                   |                     |  |                     |
| ELISA                        | JP27901        | 96    | > 12 h          | 70.31 - 4,500 pg/ml           | 9.87 pg/ml    | -                 | 100 µl              | serum, plasma, cerebrospinal fluids        | TMB 450 nm          |
| <b>soluble alpha-Klotho</b>  |                |       |                 |                               |               |                   |                     |  |                     |
| ELISA                        | JP27998        | 96    | 2 h 30 min      | 93.75 - 6,000 pg/ml           | 6.15 pg/ml    | -                 | 100 µl              | serum, plasma                              | TMB 450 nm          |
| <b>Vasopressin direct</b>    |                |       |                 |                               |               |                   |                     |  |                     |
| RIA                          | RK-VPD         | 100   | 48 h            | 1.5 - 100 pg/ml               | 0.75 pg/ml    | 2                 | 400 µl              | plasma                                     | I-125               |

# Index

| Order                                    | Page |
|--|------|
| 17-OH-Progesterone                       | 18   |
| 17-OH-Progesterone free in Saliva        | 8    |
| 2-CAT                                    | 9    |
| 21-OH Ab                                 | 10   |
| 25-OH Vitamin D total                    | 11   |
| 3-CAT                                    | 9    |
| 5-HIAA                                   | 9    |
| 6-Sulfatoxymelatonin                     | 20   |
| <b>A</b>                                 |      |
| Acetylcholine Receptor Autoantibody      | 10   |
| ACTH                                     | 20   |
| Active Androstenediol Glucuronide        | 18   |
| Active Androstenedione                   | 18   |
| Active Dihydrotestosterone               | 18   |
| Active Free Testosterone                 | 18   |
| Active PTHrP                             | 11   |
| Active Renin                             | 5    |
| Adenovirus                               | 14   |
| Adiponectin human                        | 8    |
| Adrenaline Research                      | 9    |
| Aflatoxin B1                             | 16   |
| Aflatoxin M1                             | 16   |
| Aflatoxin total                          | 16   |
| AFP                                      | 18   |
| Aldosterone                              | 20   |
| Almond                                   | 16   |
| alpha-subunit                            | 5    |
| alpha-Synuclein human                    | 12   |
| alpha2, 6-Sialyltransferase              | 12   |
| AMA-M2                                   | 10   |
| AMH                                      | 18   |
| Amyloid beta (1-38) high sensitive human | 12   |
| Amyloid beta (1-40) rat/mouse            | 6    |
| Amyloid beta (1-42) high sensitive       | 12   |
| Amyloid beta (1-42) mouse/rat            | 6    |
| Amyloid beta (1-43) (FL) human           | 12   |
| Amyloid beta (1-x) human                 | 12   |
| Amyloid beta (N3pE-40) human             | 12   |
| Amyloid beta (n3pE-42) human             | 12   |
| Amyloid beta (x-40) human                | 12   |
| Amyloid beta (x-42) human                | 12   |
| Amyloid-beta (1-40) High Sensitive       | 12   |
| ANA Hep Screen                           | 10   |
| ANA Profile                              | 10   |
| ANA Screen                               | 10   |
| Anaplasma vet                            | 6    |
| ANCA Screen                              | 10   |
| ANCA-P (MPO)                             | 10   |
| Androstenedione                          | 18   |
| Androstenedione free in Saliva           | 8    |
| Angiopoietin-like 3                      | 12   |
| Angiopoietin-like 3 mouse                | 6    |
| Angiopoietin-like 4 human                | 12   |
| Angiotensin I                            | 5    |
| Angiotensinogen total                    | 5    |
| ANGPTL2 human                            | 12   |
| Annexin V Ab                             | 10   |
| Anti-Ovarian Ab                          | 10   |
| Anti-Spermatozoa Antibody (ASA)          | 10   |
| ApoB-100 human                           | 20   |
| APP beta CTF                             | 12   |
| APP770 human                             | 12   |
| ASCA                                     | 10   |
| Ascaris lumbricoides                     | 14   |
| Aspergillus fumigatus                    | 14   |

| Order                                 | Page |
|---------------------------------------|------|
| <b>B</b>                              |      |
| Babesia vet                           | 6    |
| BACE 1                                | 12   |
| beta-2-Microglobulin                  | 5    |
| beta-hCG free                         | 18   |
| beta-Lactoglobulin                    | 16   |
| beta2-Glycoprotein I Ab               | 10   |
| Biotin (Vitamin H)                    | 20   |
| Bordetella pertussis                  | 14   |
| Borrelia burgdorferi                  | 14   |
| Borrelia vet                          | 6    |
| Brazil nut                            | 16   |
| Brucella                              | 14   |
| Brucella vet                          | 6    |
| <b>C</b>                              |      |
| c-Met human                           | 12   |
| C-Peptide                             | 17   |
| C1q Ab                                | 10   |
| CA125                                 | 5    |
| CA15-3                                | 5    |
| CA19-9                                | 5    |
| CA72-4                                | 5    |
| Calcitonin                            | 11   |
| Calcitonin ultra sensitive            | 11   |
| Calprotectin                          | 20   |
| Candida albicans                      | 14   |
| Canine Distemper Virus (CDV)          | 6    |
| Canine Parvovirus (CPV)               | 6    |
| Cardiolipin Ab                        | 10   |
| Casein                                | 16   |
| Cashew                                | 16   |
| CCL8 / MCP-2 mouse                    | 6    |
| CCP Ab                                | 10   |
| CEA                                   | 5    |
| Chagas (Trypanosoma cruzi)            | 14   |
| Chlamydia pneumoniae                  | 14   |
| Chlamydia trachomatis                 | 14   |
| Chloramphenicol                       | 16   |
| Chromogranin A                        | 5    |
| Clostridium tetani toxin              | 14   |
| Coconut                               | 16   |
| Corticosterone                        | 20   |
| Corticosterone rat/mouse              | 6    |
| Cortisol                              | 20   |
| Cortisol & Cortisone                  | 4    |
| Cortisol & Cortisone Dilute and Shoot | 4    |
| Cortisol free in Saliva               | 8    |
| Cortisol sensitive                    | 20   |
| Corynebacterium diphtheriae toxin     | 14   |
| COVID-19 (SARS-CoV-2)                 | 14   |
| COVID-19 (SARS-CoV-2) quantitative    | 14   |
| COX-2 human                           | 12   |
| Coxiella burnetii (Q-Fever) Phase 1   | 14   |
| Coxiella burnetii (Q-Fever) Phase 2   | 14   |
| Coxiella Phase 1 vet                  | 6    |
| Coxiella Phase 2 vet                  | 6    |
| Coxiella vet                          | 6    |
| CRP canine                            | 6    |
| Crustaceans (Tropomyosin)             | 16   |
| CYFRA 21-1                            | 5    |
| Cytomegalovirus (CMV)                 | 14   |
| <b>D</b>                              |      |
| Dengue Virus                          | 14   |
| Deoxyvalenol                          | 16   |
| DGP Ab                                | 10   |
| DHEA                                  | 18   |
| DHEA free in Saliva                   | 8    |
| DHEA-S                                | 18   |
| Diamine oxidase (DAO)                 | 20   |
| Dihydrotestosterone (DHT)             | 18   |
| Direct Saliva Melatonin               | 8    |
| Dirofilaria Antigen vet               | 6    |
| DMP1 rat                              | 6    |
| Dopamine                              | 9    |
| DPP4/CD26                             | 17   |
| ds-DNA Ab                             | 10   |

# Index

| Order  | Page |
|--|------|
| <b>E</b>                                     |      |
| Echinococcus                                 | 14   |
| Echinococcus vet                             | 6    |
| Egg White                                    | 16   |
| Ehrlichia vet                                | 6    |
| ENA Combi                                    | 10   |
| ENA Screen                                   | 10   |
| Endothelial Lipase (EL) human                | 12   |
| Endothelin-1                                 | 12   |
| Endothelin-1 (Big) rat                       | 6    |
| Entamoeba histolytica                        | 14   |
| EPO (Erythropoietin)                         | 20   |
| Epstein-Barr Virus (EBNA-1)                  | 14   |
| Epstein-Barr Virus (VCA)                     | 15   |
| Estradiol                                    | 18   |
| Estradiol free in Saliva                     | 8    |
| Estradiol rat                                | 6    |
| Estriol unconjugated                         | 18   |
| Estrone                                      | 18   |
| Estrone Sulfate                              | 18   |
| Estrone-3-Sulfate equine                     | 7    |
| <b>F</b>                                     |      |
| Feline Corona Virus (FCoV/FIP)               | 7    |
| Feline Immunodeficiency Virus (FIV)          | 7    |
| Feline Leukemia Virus (FeLV) Antigen         | 7    |
| Ferritin                                     | 20   |
| FGF19 human                                  | 12   |
| FGF21 human                                  | 13   |
| Fish (Parvalbumin)                           | 16   |
| Folic Acid                                   | 16   |
| FSH  | 18   |
| FT3  | 19   |
| FT4  | 19   |
| FT4 Plus                                     | 19   |
| Fumonisin                                    | 16   |
| <b>G</b>                                     |      |
| G-CSF human                                  | 13   |
| GADAb  | 17   |
| Galectin-3                                   | 13   |
| GBM Ab                                       | 10   |
| Gd-IgA1 (Galactose-deficient IgA1)           | 20   |
| GH   | 8    |
| Giardia Antigen vet                          | 7    |
| Giardia lamblia                              | 15   |
| GIP Active form human                        | 13   |
| GIP Total human                              | 13   |
| Glutadin/Gluten                              | 16   |
| GLP-1 inactive form                          | 13   |
| GLP-1, active form                           | 17   |
| Glutamate                                    | 9    |
| GRO/CINC-1 rat                               | 7    |
| GRO/CINC-3 rat                               | 7    |
| GRO/KC mouse                                 | 7    |
| <b>H</b>                                     |      |
| hAFL1 beta28                                 | 13   |
| Haptoglobin canine & feline                  | 7    |
| Hazelnut                                     | 16   |
| HB-EGF human                                 | 13   |
| hCG  | 18   |
| Helicobacter pylori                          | 15   |
| Herpes simplex Virus 1 (HSV 1) IgG           | 15   |
| Herpes simplex Virus 1+2 (HSV) IgG           | 15   |
| Herpes simplex Virus 2 (HSV 2)               | 15   |
| Histamine                                    | 9    |
| Histamine Food                               | 16   |
| hPL  | 18   |
| Human Amyloid beta Oligomers (82E1-specific) | 13   |
| Human Big Endothelin-1                       | 13   |
| Human GRO beta                               | 13   |
| Human Total HGF                              | 13   |

| Order                        | Page |
|------------------------------|------|
| <b>I</b>                     |      |
| IA-2 Ab                      | 17   |
| IFN-gamma human              | 13   |
| IGF-I                        | 8    |
| IGF-I mouse / rat            | 7    |
| IGFBP-3                      | 8    |
| IgG4 Screen Nutritional 20   | 17   |
| IgG4 Screen Nutritional 88   | 17   |
| Immunosuppressants           | 4    |
| Influenza Virus A            | 15   |
| Influenza Virus B            | 15   |
| Inhibin A                    | 19   |
| Inhibin B Gen II             | 19   |
| Insulin                      | 17   |
| Insulin Ab                   | 10   |
| Intact Proinsulin            | 17   |
| Intelectin-1/Omentin-1 human | 13   |
| Interleukin-10 human         | 13   |
| Interleukin-1beta human      | 13   |
| Interleukin-1beta rat        | 7    |
| Interleukin-6 human          | 13   |
| Interleukin-6 mouse          | 7    |
| Interleukin-8 human          | 13   |
| Intrinsic Factor Ab          | 10   |
| <b>J</b>                     |      |
| Jo-1 Ab                      | 10   |
| <b>L</b>                     |      |
| Legionella pneumophila       | 15   |
| Leishmania infantum          | 15   |
| Leishmania vet               | 7    |
| Leptin                       | 17   |
| Leptin mouse                 | 7    |
| Leptin rat                   | 7    |
| Leptospira IgM vet           | 7    |
| Leptospira vet               | 7    |
| LH                           | 19   |
| LRG                          | 13   |
| LRG mouse                    | 7    |
| Lupine                       | 16   |
| Lysozyme                     | 16   |
| <b>M</b>                     |      |
| Mac2BP human                 | 13   |
| Macadamia nut                | 16   |
| MCP-1 rat                    | 7    |
| Measles Virus                | 15   |
| Melatonin                    | 8    |
| Melatonin                    | 20   |
| Metanephrine                 | 9    |
| Metanephrines                | 4    |
| Methylmalonic Acid           | 4    |
| Milk                         | 16   |
| Molluscs (Tropomyosin)       | 16   |
| Mumps Virus                  | 15   |
| Mustard                      | 16   |
| Mycoplasma pneumoniae        | 15   |
| <b>N</b>                     |      |
| N-ERC/Mesothelin human       | 13   |
| N-ERC/Mesothelin rat         | 7    |
| Napsin A                     | 13   |
| Nephrines                    | 9    |
| Noradrenaline Research       | 9    |
| Normetanephrine              | 9    |
| NSE                          | 5    |
| <b>O</b>                     |      |
| Ochratoxin A                 | 16   |
| Ostase                       | 11   |
| Osteopontin human            | 11   |
| Osteopontin mouse            | 7    |
| Osteopontin N-half human     | 11   |
| Osteopontin N-half mouse     | 7    |
| Osteopontin rat              | 7    |
| Ovalbumin                    | 16   |

| Order                                    | Page |
|--|------|
| <b>P</b>                                 |      |
| Parietal Cell Ab                         | 10   |
| Parvovirus B19                           | 15   |
| Pasteurella multocida Toxin Antibody vet | 7    |
| Peanut                                   | 16   |
| Pecan nut                                | 16   |
| Penicillin                               | 16   |
| Phospholipid Screen                      | 11   |
| Pistachio                                | 16   |
| Plasma Renin Activity (PRA)              | 5    |
| PLGF (Placenta growth factor)            | 8    |
| PMN Elastase                             | 13   |
| PMSG                                     | 7    |
| Progesterone                             | 19   |
| Progesterone free in Saliva HS           | 8    |
| Progesterone rat/mouse                   | 7    |
| Prolactin                                | 19   |
| Protein C                                | 20   |
| Protein S                                | 20   |
| PSA free                                 | 5    |
| PSA total                                | 5    |
| Psychotropic Medication 1                | 4    |
| Psychotropic Medication 2                | 4    |
| PTH intact                               | 11   |
| Pyruvate                                 | 20   |
| <b>Q</b>                                 |      |
| Quinolones                               | 16   |
| <b>R</b>                                 |      |
| Renin                                    | 5    |
| Respiratory Syncytial Virus              | 15   |
| Rheumatoid Factor IgA                    | 11   |
| Riemerella vet                           | 7    |
| RNP 70 Ab                                | 11   |
| RNP/Sm Ab                                | 11   |
| Rubella Virus                            | 15   |
| <b>S</b>                                 |      |
| sAPP alpha (highly sensitive) human      | 13   |
| sAPP beta-Swedish Type human             | 13   |
| sAPP beta-w (highly sensitive) human     | 13   |
| sAPP total human                         | 13   |
| SCF                                      | 13   |
| Schistosoma mansoni                      | 15   |
| Sci-70 Ab                                | 11   |
| secreted alpha-Klotho                    | 20   |
| Serotonin                                | 9    |
| Sesame                                   | 16   |
| SHBG                                     | 19   |
| Sm Ab                                    | 11   |
| soluble (Pro)renin Receptor              | 13   |
| soluble alpha-Klotho                     | 20   |
| soluble alpha-Klotho mouse               | 7    |
| Soy                                      | 16   |
| SS-A Ab                                  | 11   |
| SS-B Ab                                  | 11   |
| ss-DNA Ab                                | 11   |
| Streptomycin                             | 17   |
| Strongyloides                            | 15   |
| Syndecan-4                               | 13   |
| <b>T</b>                                 |      |
| T2 Toxin                                 | 17   |
| T3 total                                 | 19   |
| T4 total                                 | 19   |
| Taenia solium                            | 15   |
| TBE/FSME                                 | 15   |
| TBE/FSME IgM vet                         | 7    |
| TBE/FSME vet                             | 7    |
| Tenascin-C Large (FNIII-B)               | 13   |
| Tenascin-C Large (FNIII-C)               | 13   |
| Testosterone                             | 19   |
| Testosterone direct                      | 19   |
| Testosterone free                        | 19   |
| Testosterone free in Saliva              | 8    |
| Testosterone rat/mouse                   | 7    |
| Tetracycline                             | 17   |
| Thioredoxin                              | 13   |
| Thymidine Kinase                         | 5    |
| Thyroidal Peroxidase-Ab (TPO-Ab)         | 19   |

| Order                         | Page |
|-------------------------------|------|
| <b>T</b>                      |      |
| Thyroglobulin (hTg)           | 19   |
| Thyroglobulin-Ab (Tg-Ab)      | 19   |
| Tissue Transglutaminase Ab    | 11   |
| TNF-alpha human               | 13   |
| TNF-alpha rat                 | 7    |
| Total IgE                     | 17   |
| Total Soy Protein             | 17   |
| Toxocara canis                | 15   |
| Toxocara vet                  | 7    |
| Toxoplasma gondii             | 15   |
| Toxoplasma IgM vet            | 7    |
| Toxoplasma vet                | 7    |
| TRAb                          | 19   |
| Treponema pallidum (Syphilis) | 15   |
| Trichinella spiralis          | 15   |
| Trichinella vet               | 7    |
| TSH                           | 19   |
| TSH canine                    | 7    |
| TSH rat                       | 7    |
| <b>U</b>                      |      |
| Ultra-Sensitive Estradiol     | 19   |
| <b>V</b>                      |      |
| Varicella-Zoster Virus (VZV)  | 15   |
| Vasopressin direct            | 20   |
| VEGF human                    | 13   |
| VEGF mouse                    | 7    |
| VEGF rat                      | 7    |
| VEGF-C                        | 13   |
| VEGFR-3/Flt-4                 | 13   |
| Vitamin A & E                 | 4    |
| Vitamin B1 & B6               | 4    |
| Vitamin B12                   | 17   |
| Vitamin H (Biotin)            | 17   |
| <b>W</b>                      |      |
| Walnut                        | 17   |
| <b>Y</b>                      |      |
| Yersinia enterocolitica       | 15   |
| <b>Z</b>                      |      |
| Zearalenone                   | 17   |
| ZnT8 Ab                       | 17   |

## List of abbreviations

| Abbreviation | Explanation                     |
|--------------|---------------------------------|
| Ab           | antibody                        |
| AD           | Adrenaline                      |
| Ag           | antigen                         |
| BALF         | bronchoalveolar lavage fluid    |
| BCE          | Bone Collagen Equivalents       |
| biol.        | biological                      |
| cc           | cell culture                    |
| ccm          | cell culture medium             |
| CSF          | cerebrospinal fluid             |
| ccs          | cell culture supernatant        |
| diagn.       | diagnostic                      |
| DOP          | Dopamine                        |
| MRM          | Multiple Reaction Monitoring    |
| I-125        | Iodine-125                      |
| MT           | Metanephrine                    |
| NAD          | Noradrenaline                   |
| neg.         | negative                        |
| NMP          | n-methyl-2-pyrrolidone          |
| NMT          | Normetanephrine                 |
| p            | plasma                          |
| PFP          | platelet free plasma            |
| plat.        | platelets                       |
| PLP          | Pyridoxal-5-phosphate           |
| pNpp         | para-Nitrophenylphosphate       |
| pos.         | positive                        |
| s            | serum                           |
| TMB          | 3,3', 5,5'-Tetramethylbenzidine |
| TTP          | Thiaminepyrophosphate           |
| u            | urine                           |
| wb           | whole blood                     |

## Who we are!



### President

**Gustav Detlev Horn**

Phone: +49(0)431/71922-0

horn@demeditec.de

# de medi tec



### General Manager

**Dr. rer. nat. Arndt Stüber**

Phone: +49(0)431/71922-60

stueber@demeditec.de



### Authorized Signatory, ppa

**Dr. rer. nat. Manfred Czapp, ppa.**

Phone: +49(0)431/71922-32

czapp@demeditec.de



### QM & Regulatory Affairs

**Claudia Banasch**

Phone: +49(0)431/71922-31

banasch@demeditec.de



### Marketing & Sales

**Jytte Stelck**

Phone: +49(0)431/71922-50

stelck@demeditec.de



### Marketing & Sales

**Dr. rer. nat. Andrea Renzing**

Phone: +49(0)431/71922-33

renzing@demeditec.de



### Product Specialist

**Jan Leipert**

Phone: +49(0)431/71922-34

leipert@demeditec.de



### Order Processing

**Kerstin Sommer**

Phone: +49(0)431/71922-23

sommer@demeditec.de



### Order Processing

**Ann-Cathrin Kostroun**

Phone: +49(0)431/71922-22

kostroun@demeditec.de



### Order Processing

**Verena Thurnes**

Phone: +49(0)431/71922-24

thurnes@demeditec.de



### Administration

**Annalena Beeck**

Phone: +49(0)431/71922-21

beeck@demeditec.de

demeditec  
diagnostics gmbh

lise-meitner-strasse 2  
24145 kiel  
germany

[www.demeditec.com](http://www.demeditec.com)



This edition succeeds all former product lists, which are no longer valid. Our General Terms and Conditions, which can be viewed on our homepage, apply. Version 12/24